



Connect
Network System

What it Does

- A total process data acquisition system.
- Continuously quantitatively and instantaneously records and reports process conditions.
- Continuously monitors and records particulate as well as any analogue signal such as temperature, pressure, associated with a process.
- Can have up to eight different traces in each of eight different trends on screen at any one time showing different parameters eg. concentration, mass flow, pressure, velocity, temperature.
- Extensive internal function library including; alarms, DDE (Dynamic Data Exchange), Historical logging, trend charting, averaging.

Product Description

The Connect Network System utilises RS485, Modbus RTU for long haul data transmission.

Connect is a multi-threaded application, written under Microsoft Visual C++ Studio, following all Microsoft recommendations. Thus Connect is capable of running simultaneously with other standard Windows applications.

Signals from various nodes are sent through junction boxes where they download to the Connect Network link. Up to 29 nodes can be incorporated into one network which can then be connected through a power supply/converter (ANP1) that converts the RS485 signal to RS232 format. A designated serial port is required for the system.

Operational Range

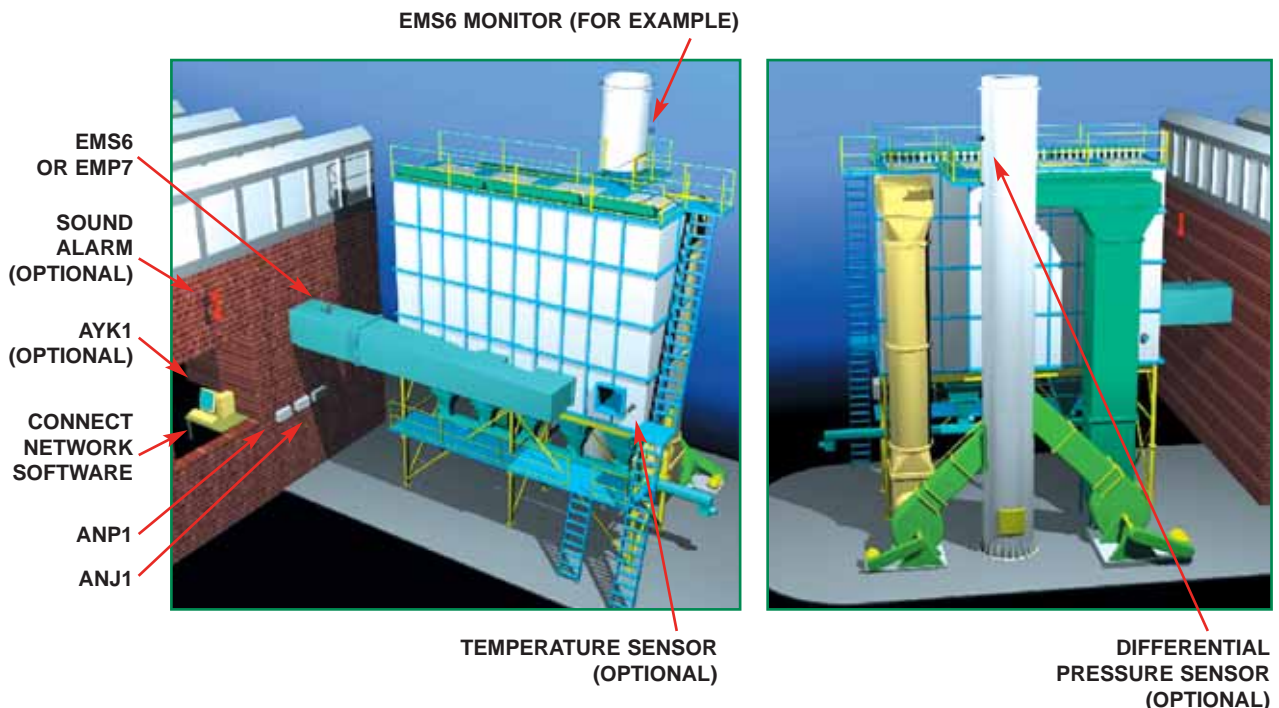
- Suitable for Windows 95, 98, 2000 or NT4.0.
- Processor requirements: Pentium 300 recommended. Free disk storage of 5MB. Plus 1MB/month per signal (typical).

Benefits

- Improved baghouse monitoring for lower maintenance costs.
- Can prevent environmental breaches through proactive data acquisition.
- Cost effective data acquisition system.
- Useful initial set-up tool before configuring EMS6 network system into PLC.

Features

- Ability to monitor entire process conditions.
- Records EPA data for historical reference and displays real time data for process control.
- Can act either as a stand-alone data acquisition and presentation system, or as a "front end" to a third party SCADA System, providing dynamic data via a standard 'DDE' Interface.
- Up to 29 nodes of various configurations (including those with analogue output) can be connected to the Connect Network eg. temperature, pressure, gas analyser.
- Events log for alarm and system reference.
- Network search facility for easy recognition of newly added nodes.



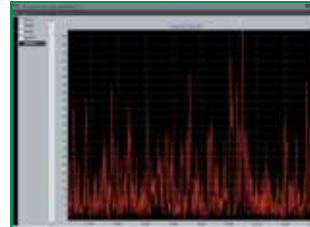
Functions

The Connect Network System records both averages that can be used for Environmental Regulatory Authorities and instantaneous levels for process monitoring.

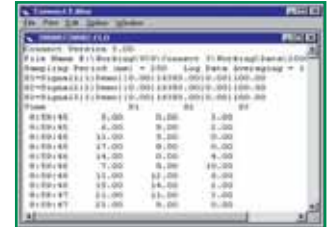
The system can be calibrated to quantitatively monitor mg/m³ (gr/ft³), mg/s (gr/s), temperature, pressure differentials, velocity and other system parameters using various calibration techniques such as isokinetic sampling.

Historical Logging of Data

- Calculates and records all process conditions.
- Records all information in table format.
- Averaging Option.
- Event log to highlight specific actions such as alarm.
- Diagnostic tool for process improvement.
- View any combination of nodes, from 1-29.
- Displays historical data as trend graph.



HISTORICAL DATA



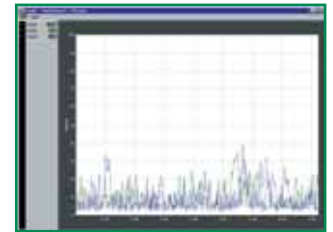
DATA LOG

Trend charts

- Monitor up to 8 charts independently.
- Each chart can be averaged, scaled and labelled.
- Up to 8 traces per chart.



EVENTS LOG



TREND INTERVAL

Alarms

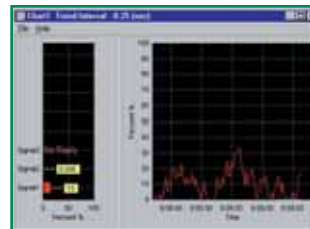
- Up to 4 alarms on any signal.
- Automatic or manual reset.
- Drive relay outputs (AYK1) or event log file and PC sound system.

Calibration

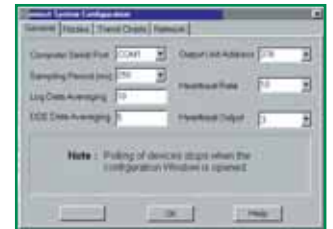
- Iso-kinetic testing function.
- Automatic or manual start/stop.

DDE

- Output of all signals into another exterior platform such as SCADA or Excel.
- Separate averaging.



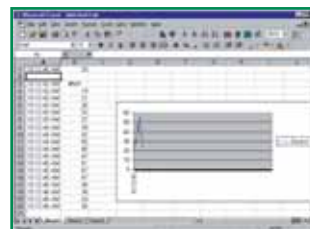
POLLING



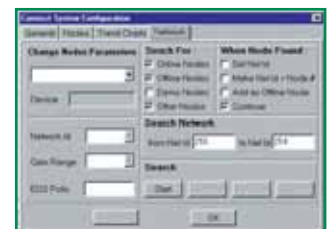
CONFIGURATON

Network

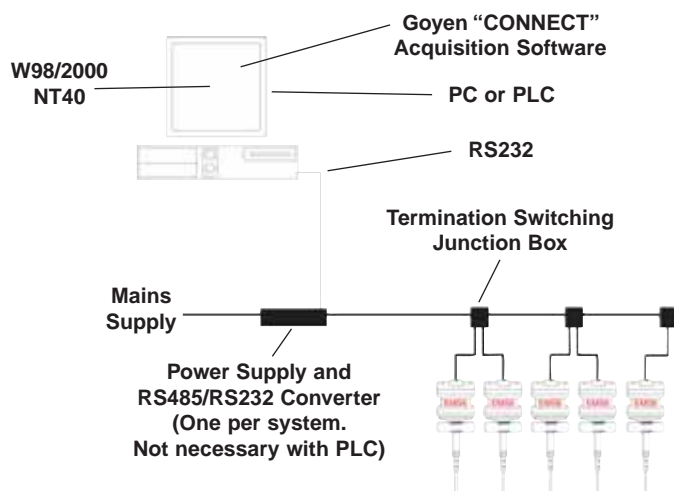
- Node parameters can be changed through the system configuration.



DDE



NETWORK





Australia

Head Office

Goyen Controls Co Pty Ltd
268 Milperra Road
Milperra, NSW 2214

Telephone: 1800 805 372
Facsimile: 1300 658 799

Queensland

Telephone: 1800 805 372
Facsimile: 1300 658 799

Victoria

Telephone: 1800 805 372
Facsimile: 1300 658 799

South Australia

Telephone: 1800 805 372
Facsimile: 1300 658 799

Western Australia

Telephone: 1800 805 372
Facsimile: 1300 658 799

Asia

Goyen Controls Co Pty Ltd
Shanghai Representative Office
1209 Greenland Business Centre
1258 Yu Yuan Road
Shanghai PC200050 CHINA

Telephone: 86 21 5239 8810
Facsimile: 86 21 5239 8812

Goyen Controls Co Pty Ltd
73-M Jalan Mega Mendung
Kompleks Bandar OUG
58200 Kuala Lumpur MALAYSIA

Telephone: 60 37 987 6839
Facsimile: 60 37 987 7839

Office

Singapore

Telephone: 65 6457 4549
Facsimile: 65 6457 4549

Europe

Goyen Controls Co UK Ltd
Unit 3B Beechwood
Chineham Business Park
Basingstoke, Hampshire, RG24 8WA
UNITED KINGDOM

Telephone: 44 1256 817 800
Facsimile: 44 1256 843 164

Tyco Umwelttechnik GmbH
Im Petersfeld 6
D-65624 Altendiez
GERMANY

Telephone: 49 6432 1001/1002
Facsimile: 49 6432 63810

USA

Goyen Valve Corporation
1195 Airport Road
Lakewood
New Jersey 08701 USA

Telephone: 1 732 364 7800
Facsimile: 1 732 364 1356