

ODO Sensor ODO3000 User Manual

Version 1.0



ODO3000 User Manual

Table of Contents

1	Introduction.....	4
1.1	System Description.....	4
1.2	How to Use the Manual.....	4
1.3	Certification.....	5
1.4	Unpacking and Inspection.....	5
1.5	Serial Number.....	5
1.6	Warranty Policy.....	6
1.7	Factory Service & Repair.....	6
1.8	Contact Details.....	7
2	Sensor Overview.....	8
2.1	Theory of Measurement.....	8
2.2	Applications.....	8
2.3	Instrument Details.....	9
2.3.1	Sensor Design.....	9
2.4	Cable Details.....	10
2.4.1	Mechanical Specifications.....	10
2.5	Options and Accessories.....	11
2.5.1	Sensor Body.....	11
2.5.2	Cable Options (Inc Detachable Cables).....	11
2.5.3	Communication Cables.....	11
2.5.4	Optional Serial Output – SDI Adapter Unit.....	11
2.5.5	Quick Set Up.....	12
2.5.6	On Board Battery Housing.....	12
2.6	Battery Replacement.....	13
2.6.1	Important Battery Information.....	13
2.6.2	Battery Warnings:.....	13
2.7	Sensor Factory Calibration.....	14
3	Sensor Operation.....	15
3.1	Wiring & Connections.....	15
3.2	Software Setup.....	17
3.2.1	Direct Link.....	17
3.2.2	SmartCom.....	17
3.2.3	Properties.....	22
3.2.4	Channels.....	22
3.2.5	External Battery: (Field Supply).....	22

3.2.6	<i>Internal Battery: (Battery Pack)</i>	23
3.2.7	<i>Battery Life & Memory Calculator</i>	23
3.2.8	<i>Temperature</i>	24
3.2.9	<i>Schedules</i>	24
3.2.10	<i>Add New Schedule (Wizard)</i>	26
3.2.11	<i>Add New Schedule – Final Screen</i>	27
3.2.12	<i>Averaging</i>	28
3.2.13	<i>Data Variation (Event Based Logging)</i>	28
3.2.14	<i>User Calibration Screens</i>	29
3.2.15	<i>Clear Memory Tab</i>	29
3.2.16	<i>Set Clock</i>	30
3.2.17	<i>PC Clock</i>	30
3.2.18	<i>Manual Entry Clock</i>	30
3.2.19	<i>Start Logger</i>	31
3.2.20	<i>Collect Data</i>	32
3.2.21	<i>Aquagraph – Tabular View</i>	33
3.2.22	<i>Aquagraph – Graphical View</i>	33
3.2.23	<i>Aquagraph – Tools & Options</i>	33
3.3	<i>Quick Check and Re-Calibration</i>	34
3.3.1	<i>Quick check</i>	34
3.3.2	<i>Re-Calibration Method Using Calibration Solutions</i>	34
3.4	<i>Installation</i>	36
3.4.1	<i>Shipping and Storage Cap</i>	Error! Bookmark not defined.
3.4.2	<i>Field Deployment Considerations</i>	36
3.4.3	<i>Cabling Considerations</i>	37
3.4.4	<i>Typical Sensor Installations</i>	37
3.4.5	<i>Field Installation must ensure:</i>	37
3.4.6	<i>Other Considerations</i>	37
3.4.7	<i>Guidelines for cleaning equipment</i>	37
3.4.8	<i>Replacing Reference Protection Ring</i>	Error! Bookmark not defined.
3.4.9	<i>Electrode storage</i>	Error! Bookmark not defined.
3.4.10	<i>Electrode replacement</i>	Error! Bookmark not defined.
4	Appendix A -Additional Information	38
4.1	<i>Specifications</i>	38
4.2	<i>Example Certificate of Conformance</i>	Error! Bookmark not defined.
4.3	<i>Example Quick Start Guide</i>	40
4.4	<i>Engineering Note – Detachable Cables</i>	41

1 Introduction

1.1 System Description

Thank you for purchasing the Greenspan Optical Dissolved Oxygen Sensor Model ODO3000. This manual provides a guide to the configuration, operation and maintenance of the sensor to provide long term reliable and accurate monitoring.

The Greenspan ODO 3000 sensor uses a robust, solid state, fluorescence based transducer for field monitoring in a variety of environments. Fluorescence based sensors are inherently reliable and low maintenance, with no need for replaceable membranes or electrolyte. No Oxygen is consumed during operation making the sensor suitable for low flow applications. The ODO3000 also responds quickly to changes in Oxygen levels.

Designed for low power consumption, the sensor can be operated from remote power sources for extended periods. An Optional On board Battery Housing provides for a complete stand alone remote monitoring sensor. Standard output is RS232 with easy connection and set-up using SmartCom software.

The Sensor is packaged in an Acetal or 316 Stainless Steel tube, with Double O ring connections for the cable and sensor head. This fully submersible sensor design is rugged and well proven and can withstand the harsh conditions found in remote field applications. The sensors are suitable for applications in harsh remote applications including groundwater, salty or acidic water conditions.

1.2 How to Use the Manual

Along with this manual, there are several other documents that may assist in the successful configuration and operation of the Greenspan ODO3000 Sensor. These should be maintained on file as a permanent reference as to the features, applications and use of the ODO3000.

Greenspan ODO3000 – Specifications Brochure

Greenspan ODO3000 – Certificate of Conformance

Greenspan ODO3000 – Quick Start Guide

1.3 Certification

The pH probes are assembled and tested in accordance with Greenspan's ISO 9001 Quality Certified System. Each Sensor is individually manufactured and certified against a traceable Standard ([See Section 2.7](#))

Following calibration the sensors undergo a range of additional control processes to ensure that all specifications are consistent and documented.

- ***The instrument is visually inspected, marked and labelled.***
- ***The complete sensor calibration record is archived for reference, and batch number information is kept on file for statistical analysis.***
- ***An individual Certificate of Conformance is issued to the customer.***

1.4 Unpacking and Inspection

All Greenspan Analytical Sensors are made to order and are individually calibrated and inspected. This ensures that they leave the factory in a working condition. They are packed in new cartons for shipping. On receipt, the customer should inspect the packaging and contents for any signs of damage during transportation. The customer should also check that all items on the delivery note have been received.

Please contact the factory in case anything has been damaged or missing. A full set of documentation including Certificate of Conformance, Quick Start Guide, and Full Operator Manual will be provided with all equipment – either in hard copy format or in electronic format on the CD shipped with the goods.

If fitted with a 316 Stainless Steel body, the unit should only be used in low EC situations. Care should be taken against possible corrosion in high Chloride or Ferric solutions, water with high iron or sulphate reducing bacteria, or low dissolved oxygen. The Sensor can be fitted with an Acetal body which provides superior corrosion protection in a wide range of chemically active waters.

Because an individual sensor may be used in a variety of locations, media compatibility should be checked before installing and advice sought from Greenspan if any doubt exists.

1.5 Serial Number

Checking the Model Number and Range

Before installing your Greenspan ODO3000 sensor check the information on the label is correct to confirm you have received the instrument you have ordered. The label will look similar to this.

MODEL	ODO3000
RANGE	0-200%Sat, 0-20 ppm
S/N	012345

The customer is advised to keep a record of the serial numbers in case the sensor is lost or the label damage. Greenspan Analytical keeps records of all sensors sold including a calibration history.

1.6 Warranty Policy

Greenspan Analytical warrants all new Greenspan products against defects in materials and workmanship for **12 months** from the date of invoice.

Products that prove to be defective during the warranty period will be repaired or replaced at the discretion of Greenspan Analytical.

Under Greenspan Analytical warranty conditions; it is the responsibility of the customer to cover shipping charges back to the factory. Upon repair/replacement Greenspan Analytical will cover the return shipping charges to the customer.

This warranty does not apply to products or parts thereof which have been altered or repaired outside of the Greenspan Analytical factory or other authorised service centre; or products damaged by improper installation or application, or subjected to misuse, abuse neglect or accident. This warranty also excludes items such as reference electrodes and Dissolved Oxygen membranes that may degrade during normal use.

Greenspan Analytical will not be liable for any incidental or consequential damage or expense incurred by the user due to partial or incomplete operability of its products for any reason whatsoever or due to inaccurate information generated by its products.

All Warranty service will be completed as soon possible. If delays are unavoidable customers will be contacted immediately.

Any sensor should not be dismantled unless under instruction from Greenspan Analytical Technical Service staff. Incorrect handling will void the warranty.

1.7 Factory Service & Repair

The correct choice of sensor and assistance with field installation can be provided by Greenspan and their sales offices. A correct choice of equipment, together with technical advice and field experience should result in long term success in the field. **Greenspan Technical Services** is dedicated to customer support and provides assistance in the selection, installation, deployment and commissioning of sensors with a full range of consulting services. All Greenspan products are designed, developed and manufactured in Australia and can be supplied at short notice.

If for some reason sensors are required to be returned to our factory or your sales representative, please note the model and serial number, Describe the problem, including how and under what conditions the instrument was being used at the time of malfunction. Clean the product and cable. Decontaminate thoroughly if used in toxic or hazardous environment. Carefully pack product in original packaging if possible & include a statement certifying product and cable have been decontaminated with supporting information. Products returned for repair must be accompanied by a completed GRA (Goods Return Advice) form. All sensors returned for service and repair work must be properly decontaminated prior to return. A cleaning charge may be applied to sensors that require further decontamination. Service work will not commence until the quotation has been accepted by the customer. A purchase order for all repair and service work will be required before work is carried out.

1.8 Contact Details

Australia

Head Office
Goyen Controls Co Pty Ltd
268 Milperra Road
Milperra, NSW 2214

Telephone: 1800 805 372
Facsimile: 1300 658 799

Sales and Service

**Queensland, South Australia
Victoria, Western Australia**

Telephone: 1800 805 372
Facsimile: 1300 658 799

USA

Goyen Valve Corporation
1195 Airport Road
Lakewood
New Jersey 08701, USA

Telephone: 1 732 364 7800
Facsimile: 1 732 364 1356

Asia

Goyen Controls Co Pty Ltd
Shanghai Representative Office
1209 Greenland Business Centre
1258 Yu Yuan Road
Shanghai PC200050, CHINA

Telephone: 86 21 5239 8810
Facsimile: 86 21 5239 8812

Goyen Controls Co Pty Ltd
73-M Jalan Mega Mendung
Kompleks Bandar OUG
58200 Kuala Lumpur, MALAYSIA

Telephone: 60 37 987 6839
Facsimile: 60 37 987 7839

Greenspan Singapore Pte Ltd
02-01, Minwa Industrial Building
39 Genting Lane
Singapore 349554

Telephone: 65 6748 0140
Facsimile: 65 6748 2534

Europe

Goyen Controls Co UK Ltd
Unit 3B Beechwood
Chineham Business Park
Basingstoke, Hampshire, RG24 8WA
UNITED KINGDOM

Telephone: 44 1256 817 800
Facsimile: 44 1256 843 164

Tyco Umwelttechnik GmbH
Im Petersfeld 6
D-65624 Altdenz
GERMANY

Telephone: 49 6432 1001/1002
Facsimile: 49 6432 63810

Mecair S.r.l.
Via per Cinisello 97
20054 Nova Milanese
Milano,
ITALY

Telephone: 39 362 375 118
Facsimile: 39 362 375 124

Address: *Tyco Environmental Systems
Greenspan Analytical Manufacturing Plant
22 Palmerin Street
WARWICK QLD 4370
AUSTRALIA*

Phone: + 61 (0)7 46601888
Fax: + 61 (0)7 46601800

Internet: www.tyco-environmental.com

2 Sensor Overview

2.1 Theory of Measurement

The Greenspan ODO 3000 sensor uses a robust, solid state, fluorescence based transducer for field monitoring in a variety of environments. Fluorescence based sensors are inherently reliable and low maintenance, with no need for replaceable membranes or electrolyte. No Oxygen is consumed during operation making the sensor suitable for low flow applications. The ODO3000 also responds quickly to changes in Oxygen levels.

2.1.1 Principal of Operation

1. The emitter sends light, at ~475 nm, to the back side of the sensing element.
2. The wetted side of the sensing element consists of a thin layer of a hydrophobic sol-gel material. A ruthenium complex is trapped in the solgel matrix, effectively immobilized and protected from water.
3. The light from the LED excites the ruthenium complex immobilized in the sensing element.
4. The excited ruthenium complex fluoresces, emitting energy at ~600 nm.
5. If the excited ruthenium complex encounters an oxygen molecule, the excess energy is transferred to the oxygen molecule in a non-radiative transfer, decreasing or quenching the fluorescence signal (see Fluorescence Quenching below). The degree of quenching correlates to the level of oxygen concentration in contact with the sensing element.

2.1.2 Fluorescence Quenching

Oxygen is able to efficiently quench the fluorescence and phosphorescence of certain luminophores. This effect (first described by Kautsky in 1939) is called "dynamic fluorescence quenching." Collision of an oxygen molecule with a fluorophore in its excited state leads to a non-radiative transfer of energy. The degree of fluorescence quenching relates to the frequency of collisions, and therefore to the concentration of the oxygen-containing media.

2.2 Applications

Applications in which the Greenspan ODO3000 can be used include:

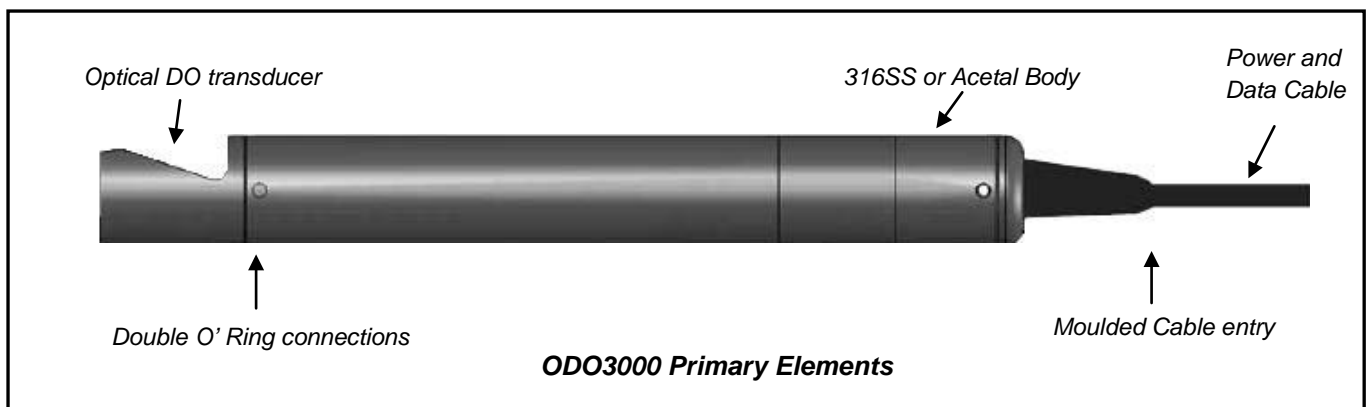
- Monitoring of streams and rivers.
- Monitoring of water storage bodies including stratification studies.
- Intermediate and final effluent treatment monitoring.
- Hydrological run off studies.
- Ground and bore water analysis.
- Drinking water filtration efficiency.
- Industrial process monitoring.
- Sludge and dredge monitoring.

2.3 Instrument Details

2.3.1 Sensor Design

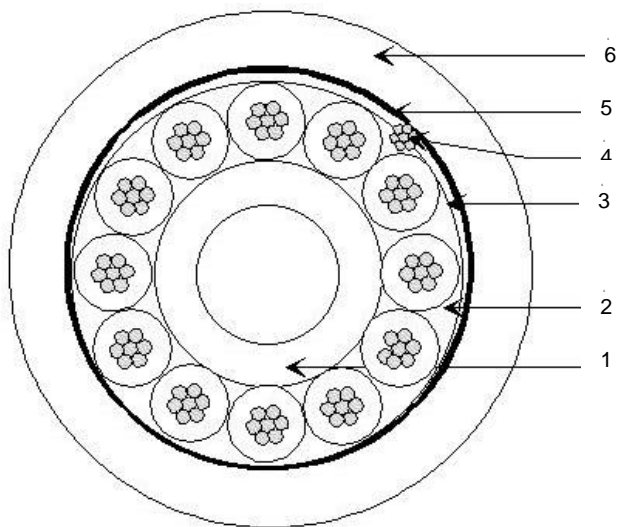
The Greenspan PH Sensor consists of the following primary elements:

- Microprocessor controlled signal conditioning and logging device
- Stainless steel or Acetal Body Material
- Sensor Head Shroud (removable for cleaning)
- Data cable or Battery Pack option



2.4 Cable Details

All Greenspan Sensors utilise a specially designed Polyurethane Cable. The cable contains 12 x conductors, 1 x drain wire, and an internal vent tube. The outer jacket is made from UV stabilized Polyurethane and is suitable for all external, underwater or harsh environment applications. This common cable construction is utilized for vented and non vented sensors and all Greenspan Water Quality Sensors. Cables are generally factory fitted at time of manufacture in specified lengths. Cables can be joined or repaired in the field providing a waterproof connection can be maintained. Alternatively, cables can be terminated in waterproof junction boxes where cabling to other devices or longer cable runs are required.



Cable Construction

- 1 – **Vent Tube:** Polyamide
(size ID x OD) 2.40 x 3.20 mm
- 2 - **12 x Conductors**
7 x 0.20 mm Tinned Copper
Section = 0.22mm² AWG24
Insulation: Polypropylene
(size) = 1.10 mm ± 0.05 mm
- 3 - **Tape:** Polyester
- 4 – **Drain Wire:** 7x0.20 TinCu
- 5 - **Tape:** Polyester Aluminium
- 6 - **Jacket:** Polyurethane black,
(size OD) 8.05 mm ± 0.15

2.4.1 Mechanical Specifications

- Specially Manufactured Greenspan Cable with 12 cores and Internal Vent
- High chemical resilience and abrasive resistance
- Conductor cross section : AWG 24,
- Electrical Resistance 9 ohm per 100m (per conductor)
- Operating temperature: 85°C (max.),
- Bending radius (static) : 6 ,
- Bending radius (dynamic) 12.
- Max Operating voltage : 250V
- Jacket Printing (white colour each meter)
- Conductor colour codes : green, yellow, white, black, brown, turquoise, violet, pink, red, blue, grey
- Tensile Strength is sufficient to self suspend the Greenspan Sensor to depths of 300m.
- Long term creep due to temperature effects or tensile loading is negligible.

The moulded cable is fitted to the sensor using a double o ring seal and located using 2 x grub screws. The length of the cable is not critical to the long term calibration and operation of the sensor (provided the electrical requirements such as minimum supply voltage are maintained).

2.5.5 Quick Set Up

Sensor

- Select data channels required using SmartCom ([See Section 3.2.4](#)).

7SDI-1000 (Refer to SDI-1000 User Manual)

- Set model type
- Set data channel output order if required
- Set data precision if required

2.5.6 On Board Battery Housing

The Greenspan range of logging Sensors including the ODO3000 Sensor may be factory fitted with a non-rechargeable long-life battery pack. This enables the sensor to be deployed at remote sites completely independent of above surface power supplies (no cable connection) and allows for discreet applications. It also functions as a backup power supply in the event of a surface disturbance to the main supply.

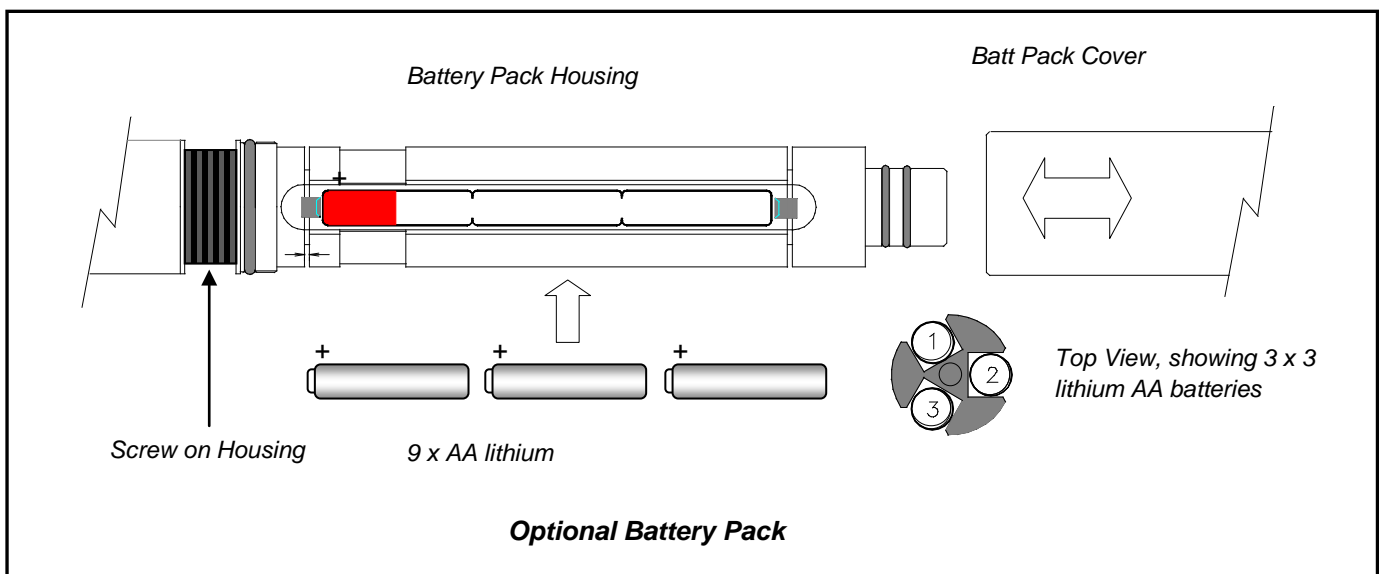
The unit is designed to allow easy access to the battery compartments for battery changeover and is housed in a cylindrical body of approximately the same dimensions as the sensor housing, thus doubling the length of the sensor.



2.6 Battery Replacement

Batteries are removed by unscrewing the housing cover, as indicated below and gently levering the battery cells until they slip out. Replacement batteries must be inserted correctly or damage to batteries may occur. Align the +ve on the battery cells with the red indicator on the housing and push batteries in. Batteries are subject to leakage after depletion. The leakage is Thionyl Chloride, a toxic, corrosive non-flammable liquid that can cause damage to equipment and personal injury if in contact with the skin or eyes. Please replace batteries when depleted.

When installing replacement batteries within the battery housing it is necessary to push firmly on the cover until it clicks home over the O rings, after this it can be easily tightened on the thread by hand.



2.6.1 Important Battery Information

The type of battery used in the battery pack is Li/MnO₂, Lithium Thionyl Chloride 3.6V AA cells. A total of nine batteries are required for each sensor battery pack. This configuration supplies a maximum 10.8 volts at 5.2A/Hr and a useful field life, depending on sensor type and logging frequency, of up to 12 months.

REPLACEMENT BATTERIES ARE AVAILABLE FROM GREENSPAN ANALYTICAL

Standard AA lithium batteries (Duracell or Energiser Type) are NOT suitable for use in the sensor.

2.6.2 Battery Warnings:

- Do not dispose of batteries in fire, dispose of in appropriate manner.
- Do not short circuit
- Do not expose to water
- Do not crush or puncture
- Do not charge
- Do not over-discharge

To maintain the maximum possible life of the cells before replacement it is strongly recommended that an external power supply is connected to the sensor when downloading data. The power drawn when downloading is at its greatest level, therefore battery depletion will be much more rapid.

Battery life will depend on the battery type as well as the frequency of logging. Connection to a computer will drain the battery supply more quickly due to the higher current imposed by the RS232 serial data communications and will considerably reduce battery life. An additional internal lithium battery maintains logger data at all times but does not sustain the logging state. This battery is not user accessible and will maintain data for up to 10 years.

If the Sensor is fitted with On Board Internal battery pack option and is to be placed in storage it is recommended that the logger be powered down and lithium batteries in the battery pack be removed. To turn off the logger after exiting from SmartCom, disconnect the communications cable and unscrew the battery cover. This exposes the battery compartment to allow removal of the batteries. Removing power will not affect any data remaining in storage so sensors could be downloaded away from the site if required.

2.7 Sensor Factory Calibration

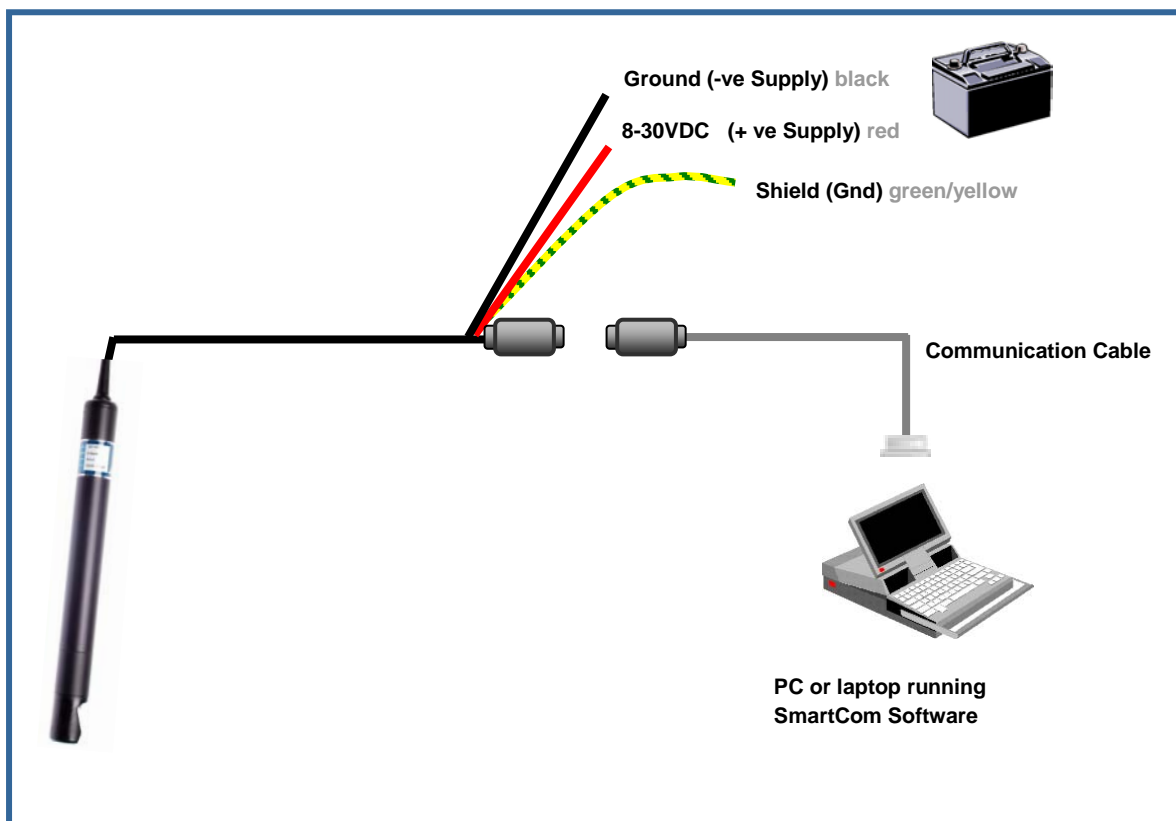
- Sensors are calibrated in a stirred, aerated DI water bath for 100% saturated and an aqueous Sodium Sulphate solution for zero.
- An extensive range of final calibration and inspection tests are carried out on every sensor.
- The sensor is visually inspected and packed, ready for despatch.
- The complete calibration records, sensor history and batch number are placed on file and archived.

3 Sensor Operation

3.1 Wiring & Connections

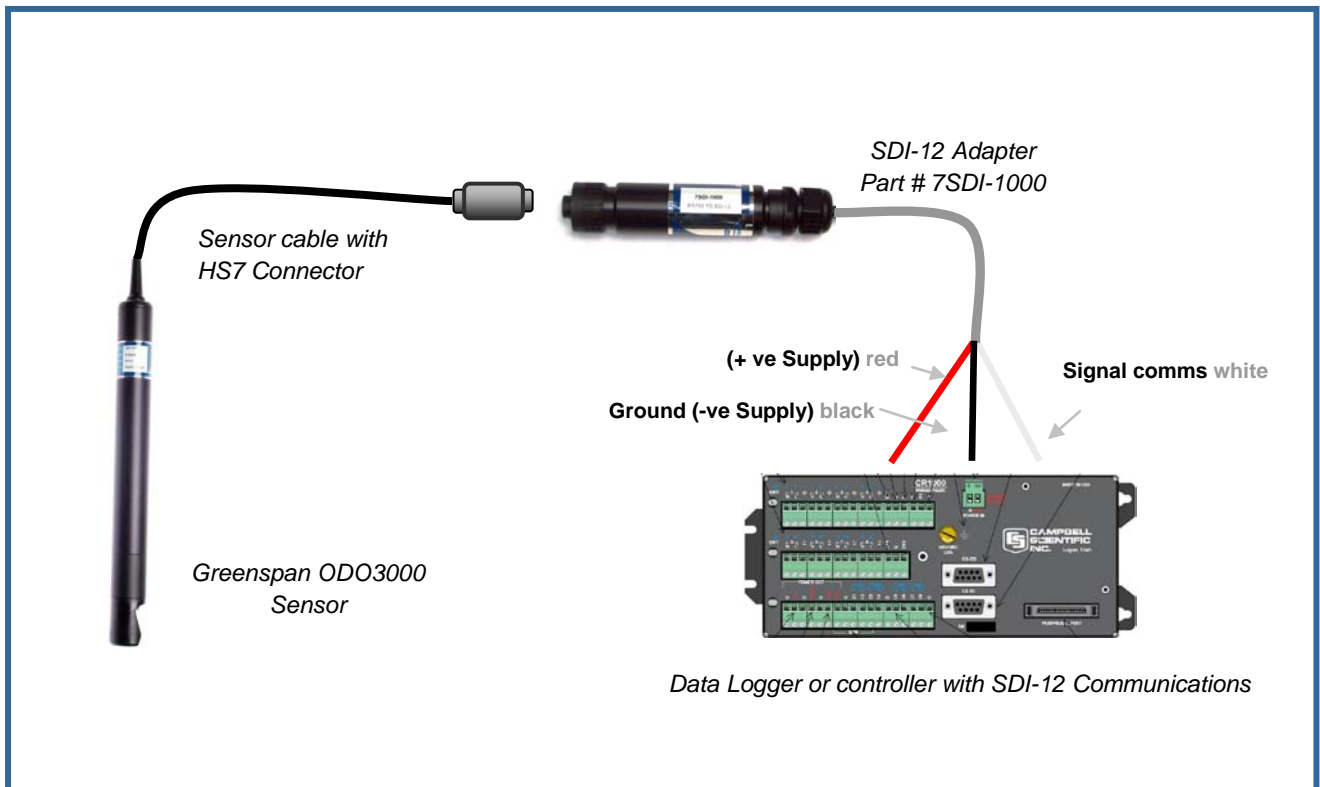
The ODO3000 is designed as a self-contained data logging sensor. It is normally powered by a 12-24V DC power supply – which can be battery, solar or Mains Plug Pack. The Logger has a large memory capacity and can operate for long periods between field visits. Typically the logged data is collected via laptop using the supplied SmartCom Software.

The following diagram illustrates the typical wiring arrangement for the ODO3000.



The SmartCom software provides for configuration of the data logger, collection of logged data, and all other functions. The Greenspan Aquagraph software provides graphical and tabular presentation of logged data and export to spreadsheet format. A brief description of the key components of the SmartCom software is included in this manual. A fully documented online help function is also included within the SmartCom software. It can be started by Hitting F1 key.

Alternatively the ODO3000 Sensor can be used as an SDI12 Sensor using the optional Greenspan SDI12 Adaptor.



Typically the sensor will be connected to a Data Logger or Process Controller which will provide the power and ground connections and provide connections for serial SDI12 output.

The Power requirements of the sensor are detailed in the Specifications Brochure.

The sensor can support internal Data logging and operate as an SDI12 sensor concurrently.

This provides a benefit of having redundant Data Logging capability (internal) while also having the advantage of serial output to a third party Data Logger or Controller that may be connected via some type of telemetry or communications system.

The configuration and operation instructions of the SDI12 Adaptor unit are included in Appendix A.

3.2 Software Setup

Communication with the Greenspan logging Sensors is performed through the PC's RS232 serial port using the supplied software: **SmartCom for Windows**. The software supports older style 9 Pin Serial Ports (Com1 & Com2) as well as newer style USB serial Ports. If using a USB port – a USB to Serial 9 pin adaptor must also be used.

To Load the Software, Place Software CD in drive, and follow all prompts.

SmartCom for Windows includes two main components:

3.2.1 Direct Link

This program is a simpler version of SmartCom which bypasses the Location Explorer Interface to provide connection to a sensor. It is suitable for Direct Com Port Connections only. To connect to a sensor, select the Com Port and click the connect button. Once connected to the sensor the user has the full range of SmartCom functionality available to them but no local Database records of changed or existing Sensor Properties are stored by the software. This version of the Software is recommended for the casual field visit or for technical staff examining the sensor.

3.2.2 SmartCom

This is the full version of SmartCom which includes the **Location Explorer** Interface to provide management of individual and/or multiple sensors. This version of the software is the recommended version for customers wanting management of sensor(s) and their logged data.

The following software is required for running the ODO3000 Sensor:

1. **SMARTCOM** for Windows runs on a PC, and facilitates manipulation of system setup information, processing and data retrieval. The program is supplied on a CD disk along with support files. It is compatible with WIN98, WIN2000, NT and XP operating systems. Mouse and keyboard operation is fully supported.
2. **Internal firmware**. The logger has a resident program that manages communications, data logging and data retrieval. It is not normally accessible by the user; however it may be upgraded in the field if required.
3. A utility program called **AQUAGRAPH** is also provided on the installation CD. This allows the user to view, graph and export the data. AQUAGRAPH may be accessed from within SMARTCOM. Online help is available from within the program.

The Software will load programs and other files into the following folders:

C:\Program Files\SmartCom for windows

Several programs will be loaded

SmartCom

Smartpoll

Smart Standby

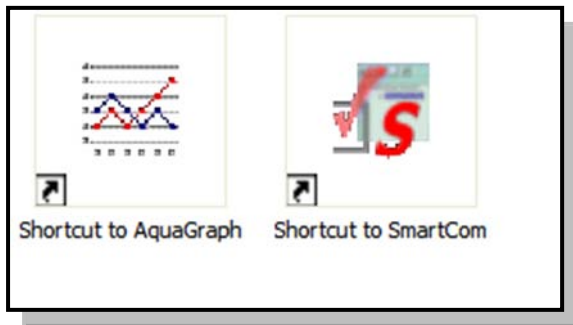
Another folder will also be created

C:\Program Files\SmartCom for windows\AquaGraph

With the Graphical display program

Aquagraph

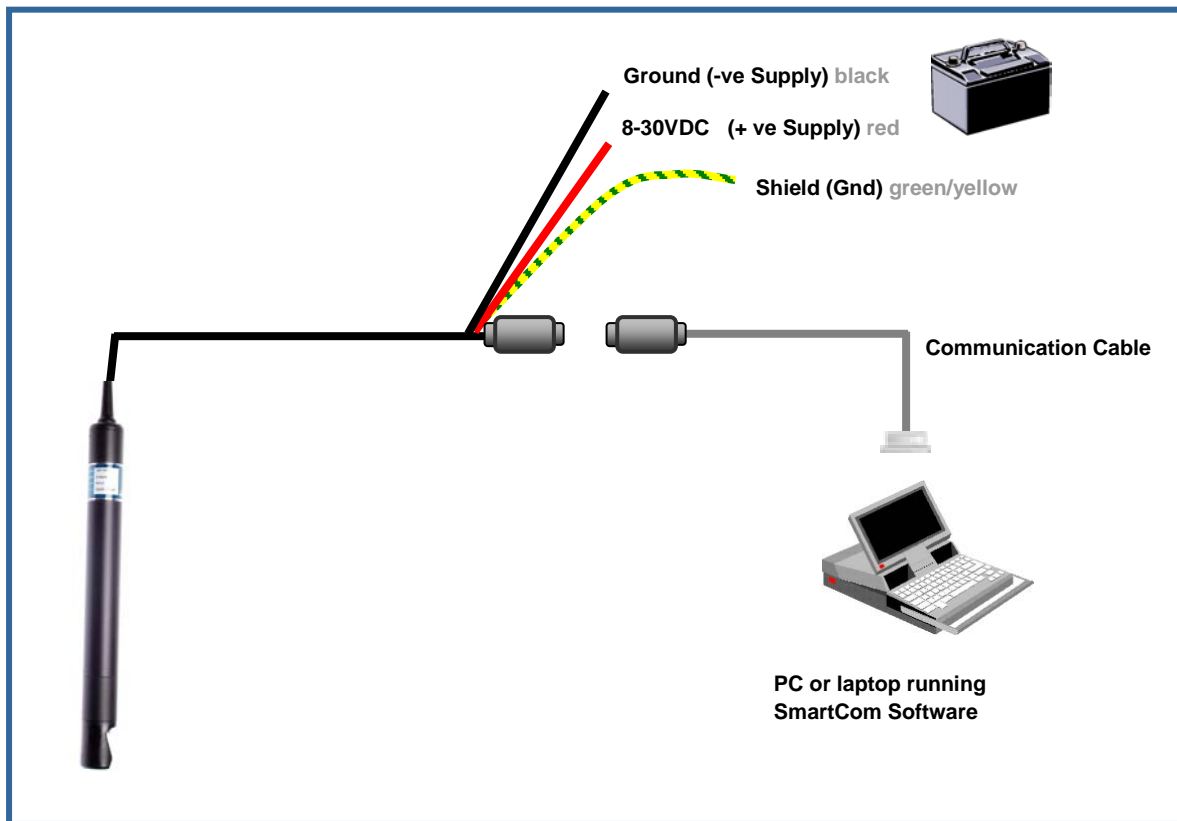
Note: Administrator Access is required for the Loading of SmartCom Program



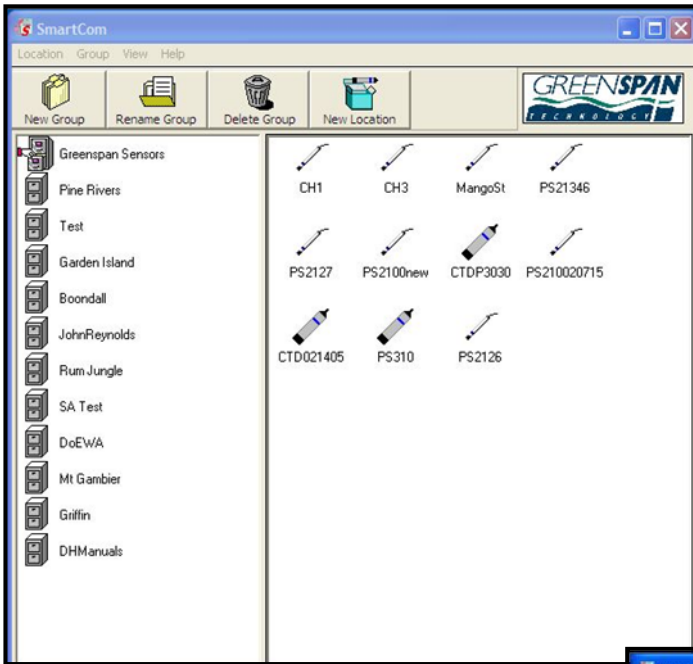
It is recommended that shortcuts be created for the 2 main programs SmartCom & Aquagraph and moved into a dedicated folder on the desktop.

To Run the Program double click on the SmartCom icon.

To use the full functions of the software a fully operational sensor with power supply and all communications leads should be available. Either internal or external battery can be used to power the sensor.



Fully Documented Help Function is available for SmartCom by hitting F1 key while software is running.



The Main Screen is divided into 2 Panels.

The left side shows the Groups. The right side shows the locations within each Group. (The concept allows all sensor sites to be put together into logical groups – eg by catchment, area, client, sensor type etc)

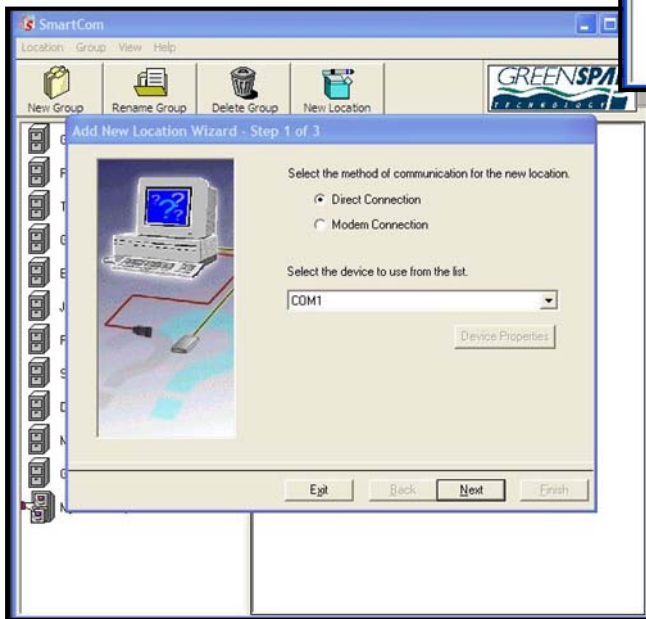
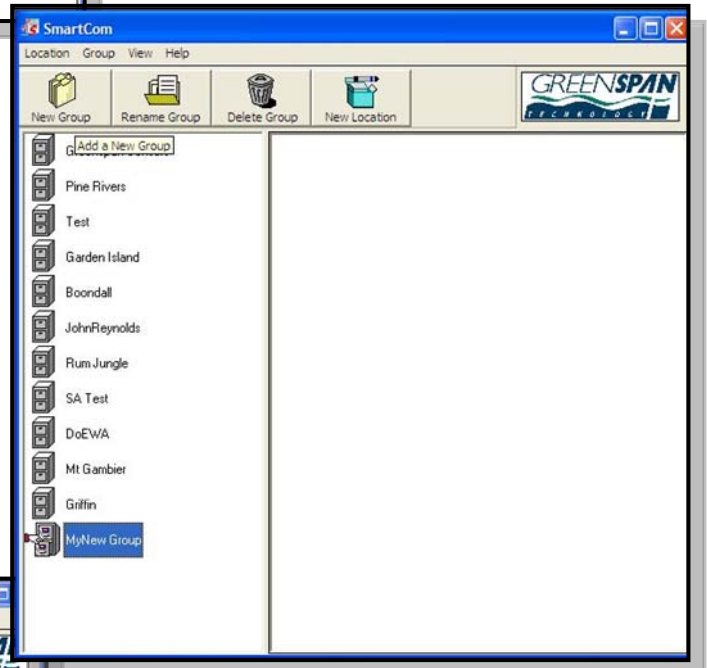
Locations refer to individual sensors that may be located locally or remotely. Groups and Locations should be named to reflect the actual station details.

The 4 buttons at the top allow the creation and removal of Groups, and Locations.

To create a new Group – Hit the New Group Button and fill in the preferred name.

To create a new location – highlight the Group then hit the New Location Button.

A wizard will start up to guide you through the process:



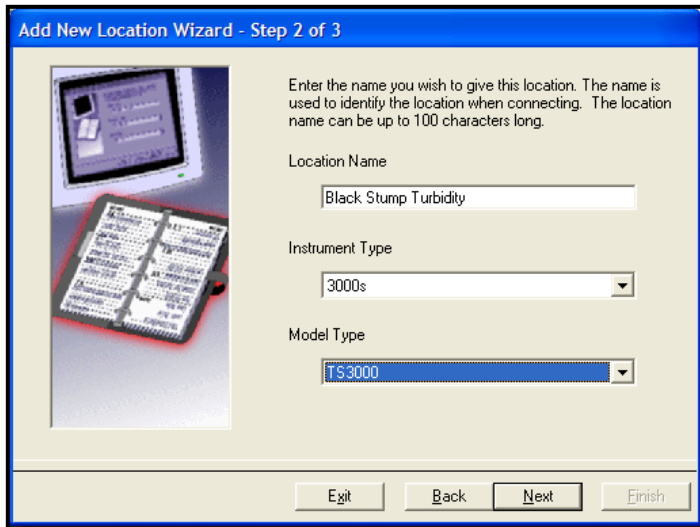
The Wizard Has 3 Steps:

Page 1 – requests how to connect to Sensor:

E.g. Direct Connection via Com port (Serial cable between Sensor and PC) Or

Modem connection via GSM / 3G / landline Modem. You will need to enter the phone number of the remote modem.

Hit Next Button.



Step 2 requests Site Details:

Location Name
Instrument Type
Model Type

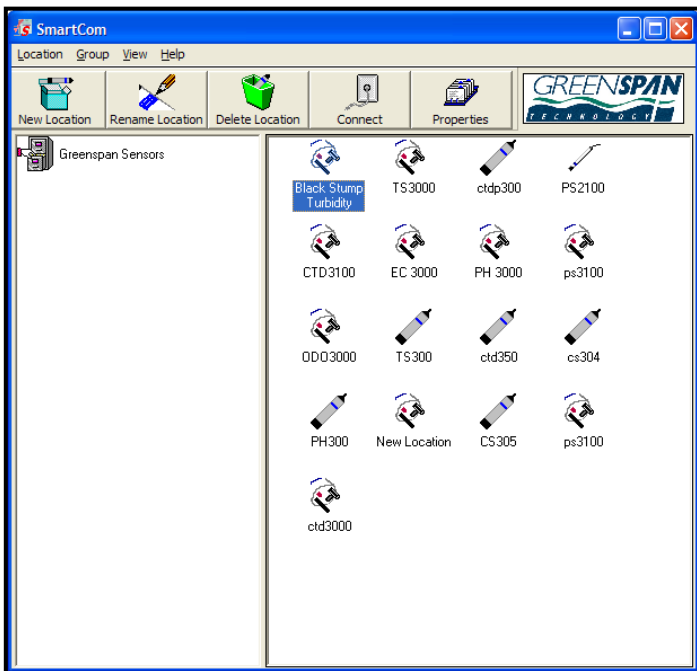
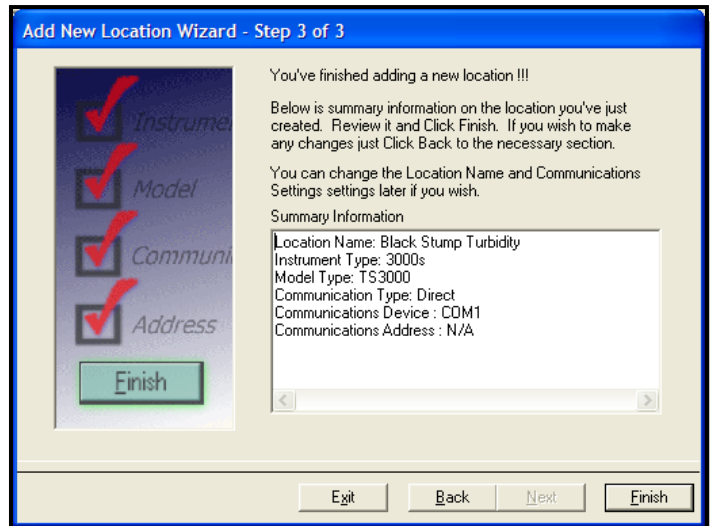
E.g. this screen will add a new site
With an ODO3000 Logging Sensor
Named: Black Stump Turbidity

Hit Next Button.

Step 3 Gives a Summary of the entered
Data and asks for confirmation.

Change Details or

Hit Finish Button

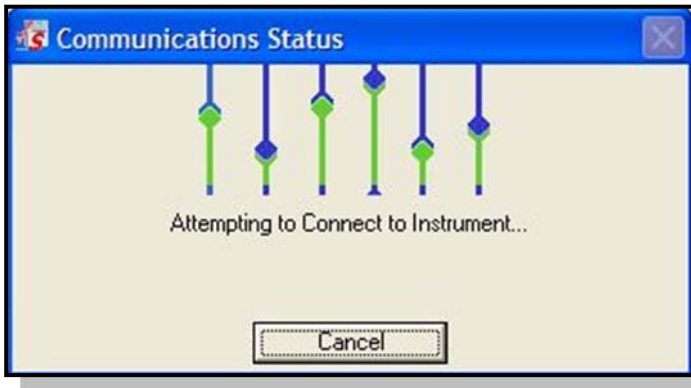


The screen then reverts to the original start
screen and should now show the new Group
and the new location.

To connect to the Sensor
Select the Group
Highlight the location and Hit Connect
Or
Double click on the location

All information relating to the Site is held in
files created in the SmartCom folder
directory.

C:\Program Files\SmartCom for
windows\...
...\Group Name\Location Name.



A Pop up will show the steps involved in communicating with the Sensor

- Attempting Wake Up
- Attempting to Connect
- Reading Details
- etc

This will take approx 30 seconds.

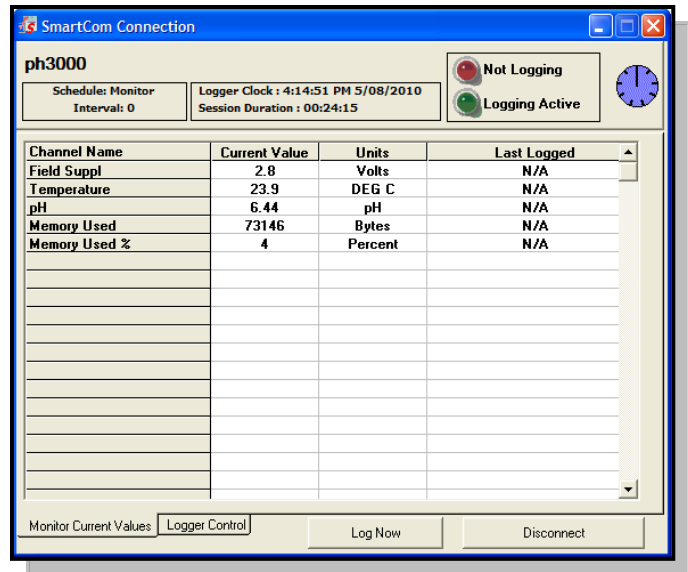
If connection cannot be established – check all power and communication connections.

When connection is established the Monitor Screen will appear...

This screen updates every 10 seconds and shows the real time data.

Clock times, Battery Volts, Logging Schedules Memory Usage should be noted. The Green or Red Leds indicate if Sensor is actively Logging or Not.

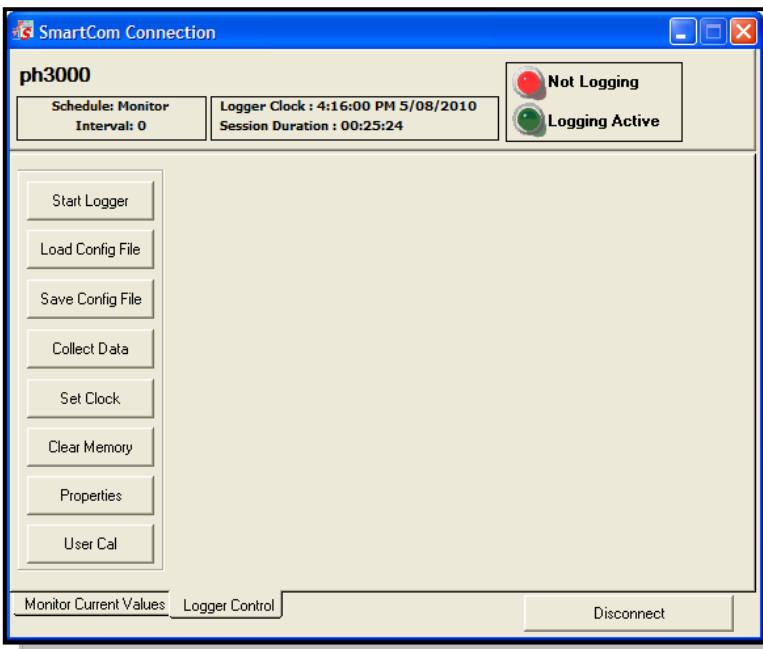
There are 2 tabs at the bottom. Hit the Logger Control Tab for all configuration and Logger set up details.



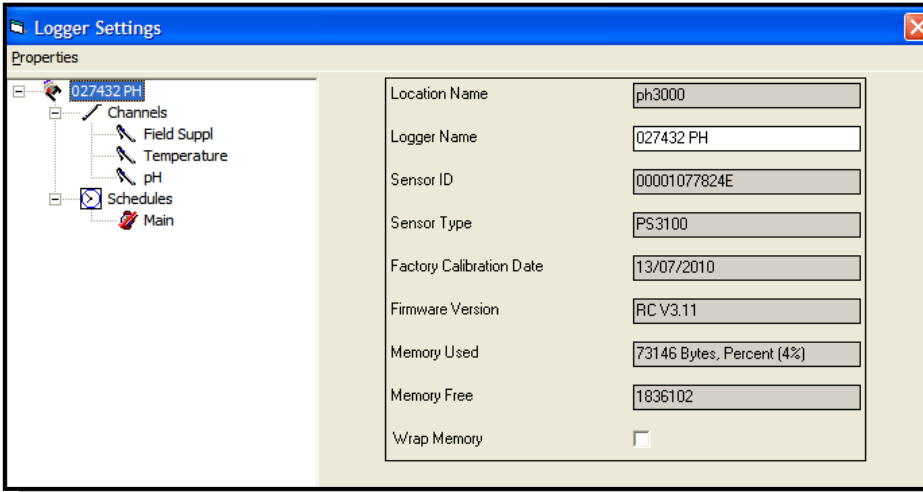
The Logger Control Screen provides access to all configuration, Data retrieval, Logger management and Calibration routines.

The Logger is very flexible and care must be taken to check that Data Logging has been initiated and is working properly, prior to deploying the sensor into a remote site. It is recommended that thorough testing of the sensor be performed in the office to provide confidence and experience with the various logger functions.

All Sensors are supplied from the factory fully calibrated and tested. It is not normally required to perform any additional calibration functions on the sensor.



3.2.3 Properties



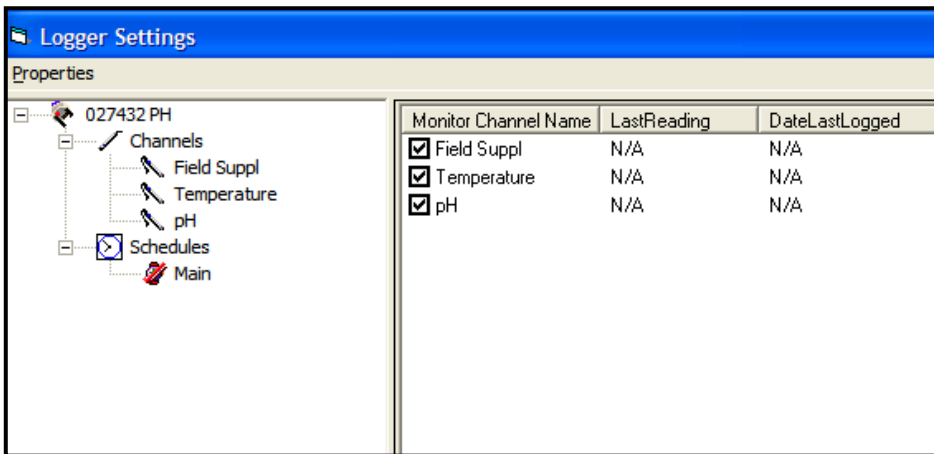
Key functionality of each of the Property Buttons will be described below.

This front screen provides a summary of all the key sensor information including Serial Numbers, Model Types Firmware Versions etc.

The Channels that are configured for the Sensor.

The Schedules control which channels are logged and the frequency of Logging.

3.2.4 Channels

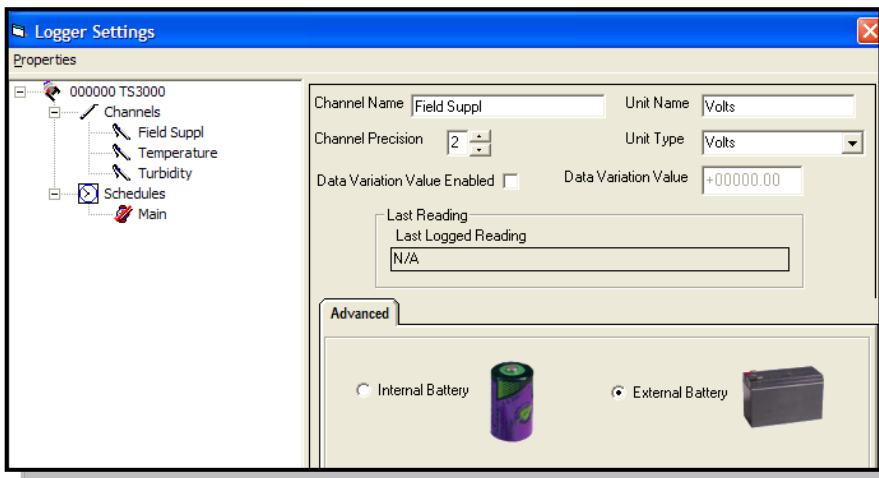


Controls and displays the various Channels that will be displayed on the Monitor Screen.

Channels that are not being used or not required to be displayed can be un-checked and will not be displayed on the Monitor Screen.

This screen below shows that Internal Battery (Battery Pack) is not used and will not be displayed on the Monitor Screen)

3.2.5 External Battery: (Field Supply)



The Sensor will be powered by some type of DC (12-24V) power supply which may be either an internal battery pack or an external battery system. The user must click and select the correct battery type to ensure accurate battery life & voltage calculations.

Select the Option External Battery if using an external 12V battery.

3.2.6 Internal Battery: (Battery Pack)

Greenspan Sensors can be configured with an on-board lithium battery pack to provide a complete stand-alone logging sensor.

If the sensor is fitted with the internal on-board battery pack select the Option at left: Internal Battery.

All batteries whether internal or external (sealed or acid type) will gradually degrade over time The Shelf life of batteries is generally 1-5 years, but can be affected by extreme temperatures.

A feature of the logger allows the user to enter the date of installation and expected Date of Renewal of the batteries, to ensure they are replaced before their due date.

3.2.7 Battery Life & Memory Calculator

Provides an estimate of the Memory life and Battery life (days) based on the amount of logging that has been specified via the schedules.

The calculator uses information on the sensor power usage, the frequency of data logging, and the battery capacity to determine how long it will operate before the memory fills, or the batteries go flat.

If using a wrap memory function – the logger will fill with data and commence to overwrite the earliest data.

If using a solar power supply – the battery will likely last until its shelf life determines that it be replaced.

The user can enter the size of the Memory (bytes) & Battery (Ah), and add other power usage such as a Data Modem.

Hit the refresh button to generate new estimates – after changing any of the other parameters. A text box also pops up to provide key information to the user to advise of battery and memory information.

3.2.8 Temperature

Channel Name: Temperature Unit Name: Celsius

Channel Precision: 2 Unit Type: Celsius

Data Variation Value Enabled: Data Variation Value: +000000.00

Last Reading

Last Logged Reading: N/A

User configurable items include:

- Unit Name
- Unit Type
- Precision (No of decimals)

Data Variation can be ticked, and a value entered, which allows event based logging – should the amount vary by more than the variation between Scan periods.

3.2.9 Schedules

ScheduleName	Start Method	Stop Method	Scans Completed
Main	1/01/2002	Def. STOP DateTime	0
hourly	1/01/2002	Def. STOP DateTime	0

Schedules are user configured:

- Added
- Removed
- Modified
- Enable
- Disabled

Up to 4 Schedules can be running together.

Example Schedule – Battery Volts (Field supply)

Schedule Enabled

Schedule Name
Field supply

Channels Used in Schedule
0. Field Suppl

To add channels to a schedule, drag and drop channels from the Tree View, into the adjacent list box max of 8. To Delete channels, right click on channel and select remove.

Logging Settings Averaging

Settings

Scan Time 3 Hours

Record Time 3 Hours

Maximum Number of Scans 0000000

Stop Method

Start Method

This Schedule shows that Field Supply (External Battery) volts will be measured (Scan Time) every 3 Hours. The Data will be logged (Record Time) every 3 Hours.

The Schedule is Enabled (box checked) and will operate whenever the Logger is turned on Logging.

The start an end time were set to Manual which means that this Schedule will start and stop with the logger.

Example Schedule – Water Quality Parameters

Schedule Enabled

Schedule Name
hourly

Channels Used in Schedule
4. Temperature
5. Turbidity

To add channels to a schedule, drag and drop channels from the Tree View, into the adjacent list box max of 8. To Delete channels, right click on channel and select remove.

Logging Settings Averaging

Settings

Scan Time 1 Hour

Record Time 1 Hour

Maximum Number of Scans 0000000

Stop Method

Start Method

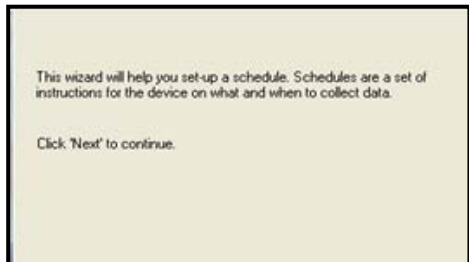
The Schedule controls the measurement and logging of data as follows:

- When the logger wakes up to take measurements. (Scan Time)*
- When the logger wakes up to Log Data (Record Time)*
- Maximum No of Scans (Optional – not recommended)*
- Which Channels are included into the Schedule (min One, Maximum – all channels)*

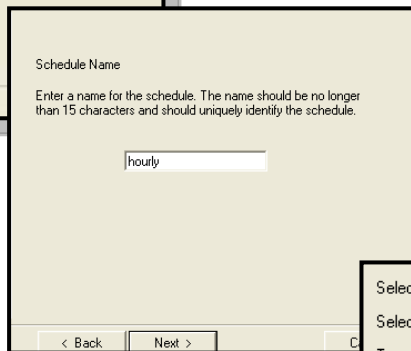
This example shows a Schedule that will wake up and measure Temp, and turbidity – every 1 Hour. It will also log the data for these channels every Hour.

Note – The Schedule Must be enabled (check box) for it to operate. It is possible to have several Schedules in the list that are not enabled and hence will not run when logger is started.

3.2.10 Add New Schedule (Wizard)

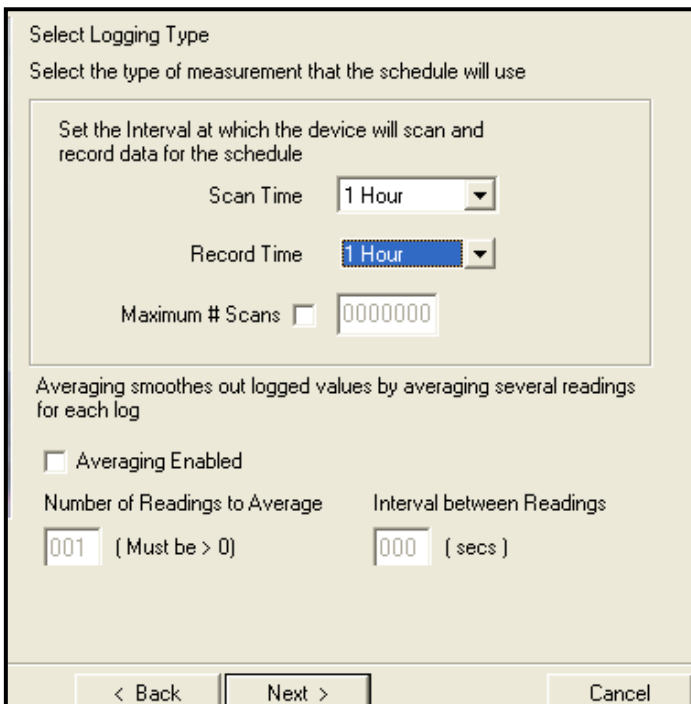
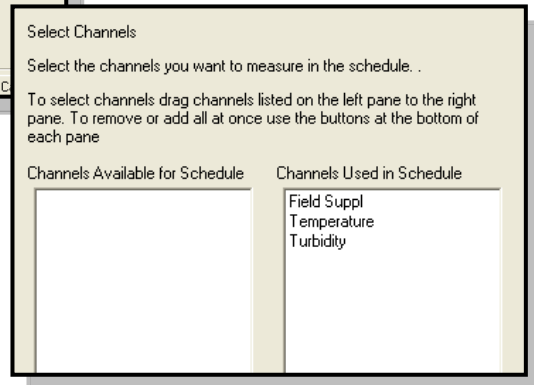


A wizard guides the user through the Add New Schedule procedure.



Give the New Schedule a Meaningful Name! (Eg Hourly)

Highlight and Drag over the Channels that are required in the new schedule. (This example shows Field supply, Temperature and turbidity Channels)



Select the Scan and Record times from drop down list. Sensor will wake up and take a measurement every Scan time, and check if the Data Variation is exceeded for the various Channels. If Data Variation has occurred – Data will be logged.

The unit will force a Data Log every Record time.

A limit can be placed on the Maximum scans. (Schedule will stop after Max scans reached)

Averaging can be configured for the Schedule.

Start and Stop times can be configured for the Schedule.

It is strongly recommended to use Manual start and stop (default) to ensure that all schedules are operational when logger is started.

Select how you would like to start this schedule

Manual Start

Time

< Back Next >

Select how you would like the schedule to stop.

Manual Stop

Time

< Back Next >

3.2.11 Add New Schedule – Final Screen

Summary of Schedule

Schedule Name: Channels Selected:
0. Field Suppl
4. Temperature
5. Turbidity

Scan Time:
Record Time:

Start Method:

Stop Method:

Averaging: Number of Readings:
Interval between Readings:

< Back Next > Cancel Finish

The final Screen shows summary of the new Schedule.

The Schedule will now appear in the list of Schedules. One or more Channels must be added to the Schedule and it must be enabled to allow it to run.

This example shows that the Schedule named Hourly will measure and log Field supply, Temperature and Turbidity Data every hour, whenever the Schedule is enabled, and the logger is turned on. (Logging Active, Green LED on Monitor screen flashing).

3.2.12 Averaging

Averaging enables several readings to be taken and averaged, each time the sensor wakes up at the Scan Period. This allows data fluctuations to be smoothed. For example Logging of Tidal Water levels is typically averaged over say 10 readings say 3 seconds apart to remove the effects of Wind and Swell.

As averaging can increase the time required to generate a reading, a warning will advise the limits of the averaging.

Note: Averaging does require the sensor to turn on more frequently at each Scan period and does have an impact on power usage and battery life.

Averaging can be configured for any or all channels.

3.2.13 Data Variation (Event Based Logging)

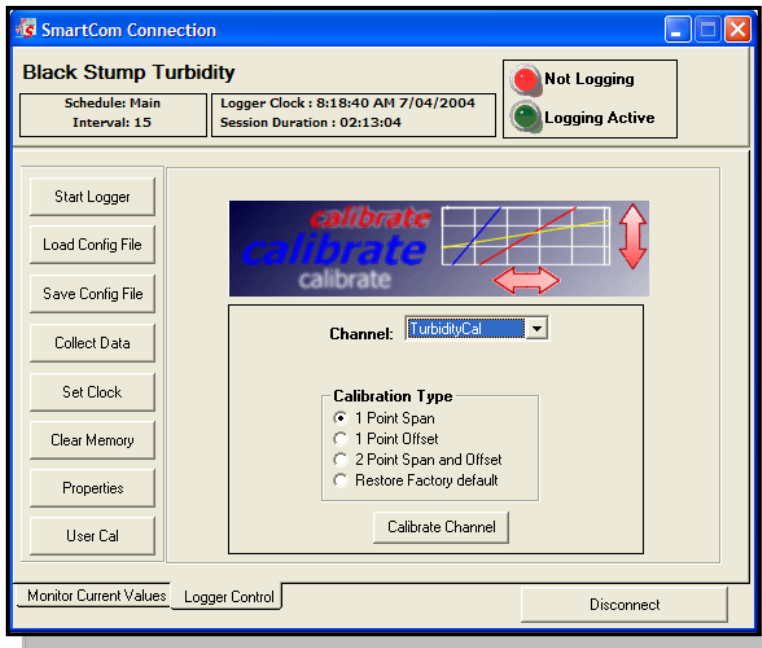
To provide Event Based logging the Sensor can be configured to Scan (take a measurement) on a frequent basis, but only Record Data (Log data) if a specific event size (Data Variation) has occurred since the last logged data point.

The Schedule must be enabled. The Channel must be in the Schedule and configured with a valid Data Variation.

(This example shows Turbidity will be logged if the reading varies by more than 10NTU from the previous logged reading)

Note if the Data Variation is set to a very small amount, then it is more likely that the data variation will be exceeded, and data will be logged each Scan Time. Hence it is necessary to set the Data Variation based on realistic variations of the Parameter being monitored.

3.2.14 User Calibration Screens

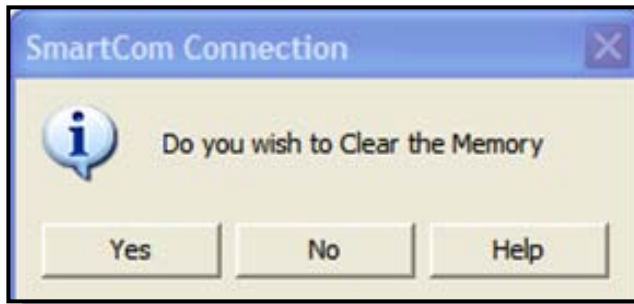


Allows re calibration of channels within the logger.

Please consult your sales or technical support specialist before recalibrating the sensor.

The Option “Restore Factory default” allows the sensor to be reset to the original factory calibration.

3.2.15 Clear Memory Tab



This control is used to clear the contents of the Data Logger Memory.

Once the memory is cleared – it is gone forever!!!

Only perform this function if you have collected and checked all the data from the sensor.

Aquagraph can be used to view and check data

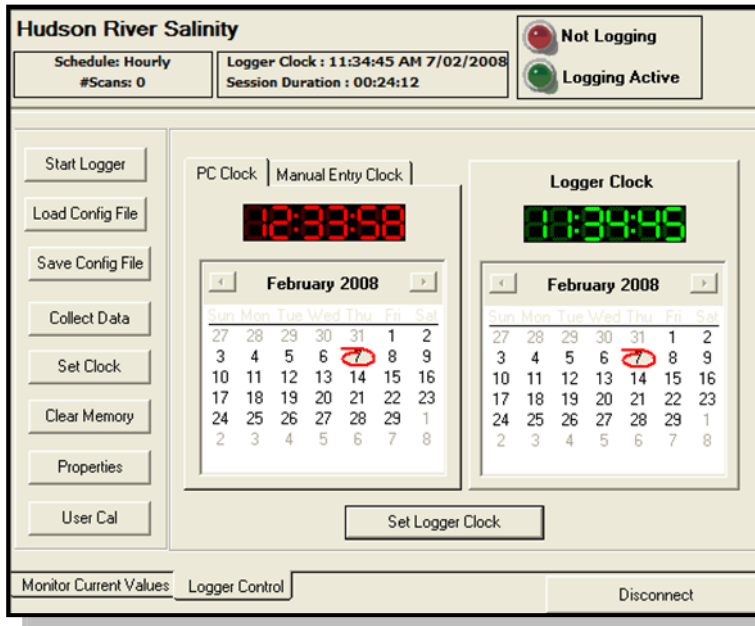
before deleting the memory contents.

If using the memory Wrap function – the memory will fill and then overwrite the oldest (earliest data)

If not using the Memory Wrap function – the memory will fill and then no more data will be logged. (i.e. all the data from the start of the logging period will be retained until it is cleared)

3.2.16 Set Clock

The logger has an internal clock to provide time stamping for all data logging. The clock can be reset to the correct local time via two different methods.



3.2.17 PC Clock

Option 1 – allows the Logger Clock to be set to the clock time of the PC being used.

PC Clock shown in red (left)
Logger Clock shown in green (right)

The Logger clock is displayed in the top of the screen – and should be checked to confirm it is correct.

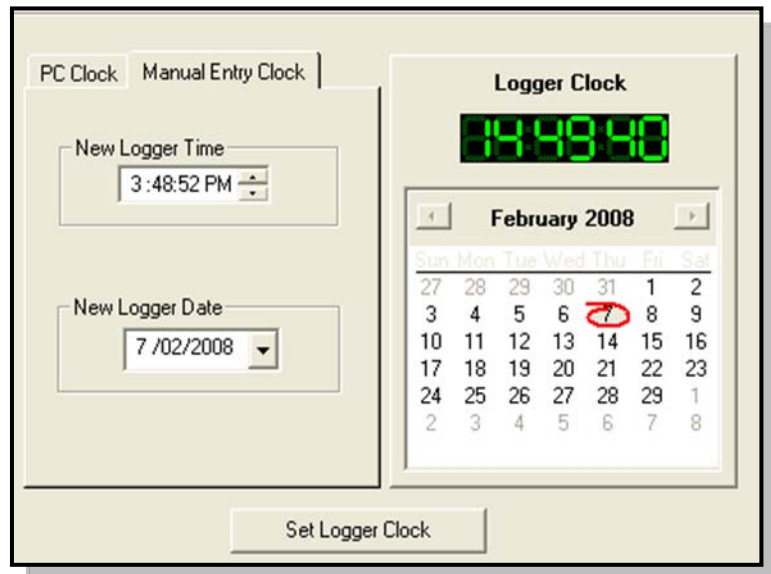
3.2.18 Manual Entry Clock

Option 2 – allows the Logger Clock to be set to a User Manually Entered time.

Screen shows the drop down menus for the user to enter the correct local time and date settings into the Logger Clock.

Logger Clock shown in green (right)

The Logger clock is displayed in the top of the screen – and should be checked to confirm it is correct.



3.2.19 Start Logger

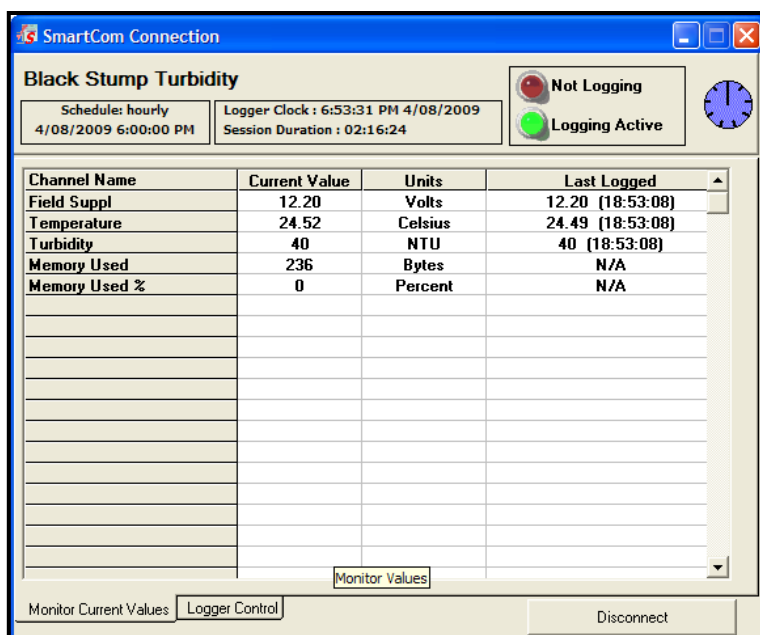
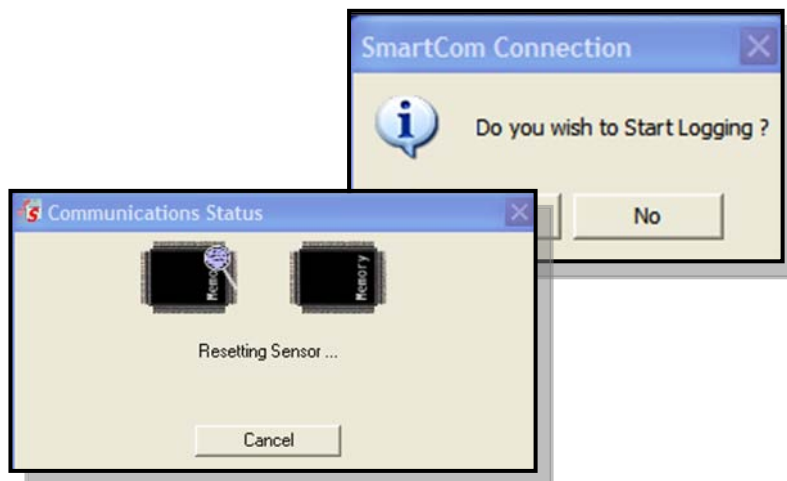


When starting the logger –the user is able to enter comments, and is given an option to clear memory.

All enabled Schedules will be started when logger starts. Schedules of different logging frequency will start at different clock times.

(e.g. a schedule running every 5 minutes will start at the next whole minute)

(e.g. a schedule running every 3 hours will start at the next whole 5 minute)

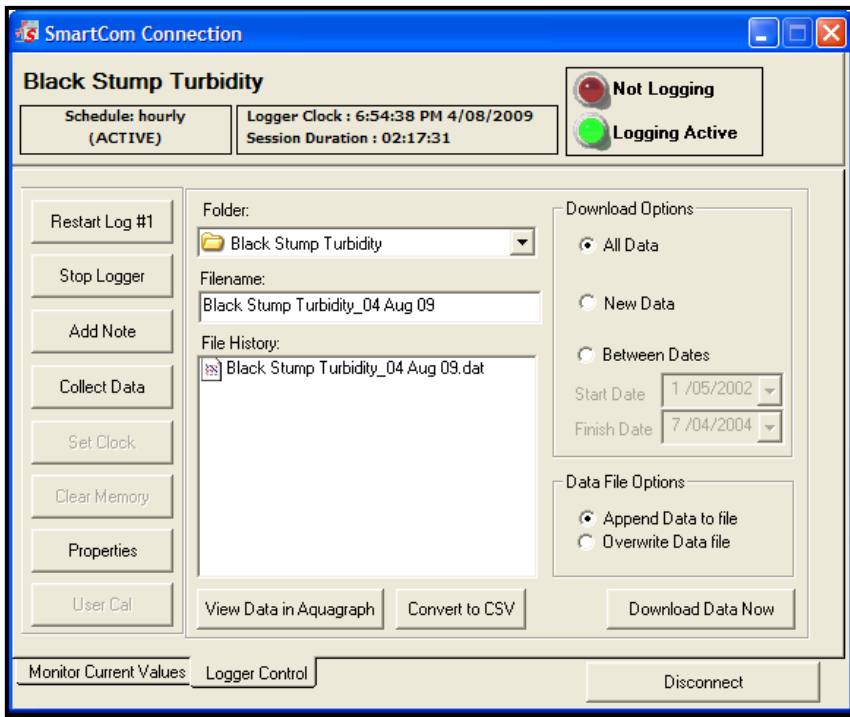


Confirm Logger is operational by checking the following:

Clock time is set to local time & date.
Green light flashing (Logging Active)
Blue dial top right updates every 10s
Current Value will update every 10s
Last Logged will update at the logging interval. Sensor can be put in bucket of water, heated, cooled, etc to confirm the sensor is working ok.

A data collection after several minutes logging is a check that everything is working OK

3.2.20 Collect Data



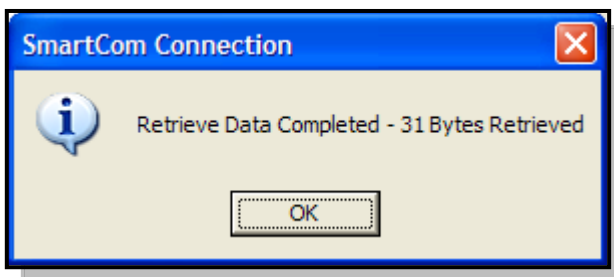
This allows collection of the logged data. Various options allow collection of all Data, New Data or Data between specific dates.

Data can be downloaded to new files, or appended to existing files.

Data is not deleted from the Logger during this process and can be re-collected many times.

The Data Logger does not need to be stopped for the collection process, and normal logging of data will continue while the data downloads.

The Data is extracted in Binary Format and requires the Aquagraph program to decode into text format.



Data collection can take up to several minutes for direct connection (serial cable) or longer for remote modem connections.

It is always more efficient to perform regular data collections of New Data – and append to a Master File, rather than try to collect very large parcels of data.

Once complete the Data can be viewed in Tabular and Graphical format by hitting the View Data in Aquagraph button.

3.2.21 Aquagraph – Tabular View

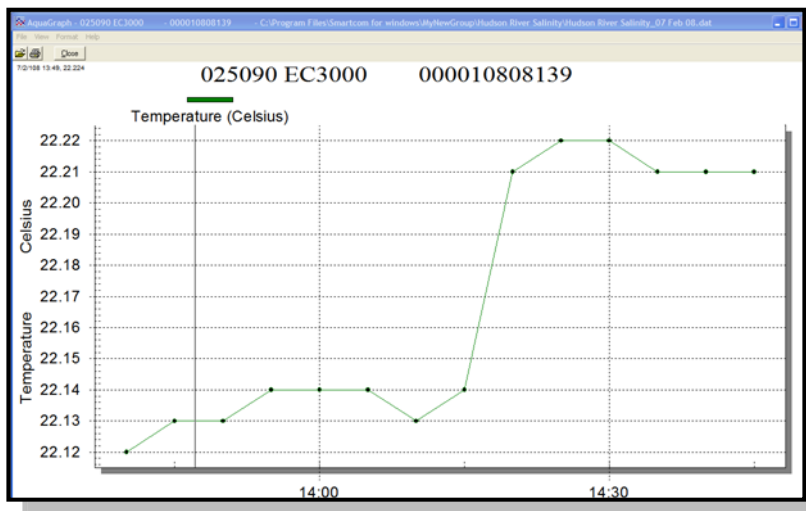
Date	Time	Elapsed Time (mins)	Schedule	Parameters				
				Temperature Celsius	EC RAW uS/cm	EC NORM uS/cm	TDS TDS	Salinity mg/l
7/02/2008	1:40:00 PM	0.0000	1	22.12	-5046	-5304	15	
7/02/2008	1:45:00 PM	5.0000	1	22.13	-4339	-4559	15	
7/02/2008	1:50:00 PM	10.0000	1	22.13	-5761	-6054	15	
7/02/2008	1:55:00 PM	15.0000	1	22.14	-4340	-4560	15	
7/02/2008	2:00:00 PM	20.0000	1	22.14	-4340	-4560	15	
7/02/2008	2:05:00 PM	25.0000	1	22.14	-3629	-3812	15	
7/02/2008	2:10:00 PM	30.0000	1	22.13	-3626	-3811	15	
7/02/2008	2:15:00 PM	35.0000	1	22.14	-4339	-4559	15	
7/02/2008	2:20:00 PM	40.0000	1	22.21	-3642	-3822	15	
7/02/2008	2:25:00 PM	45.0000	1	22.22	-3644	-3823	15	
7/02/2008	2:30:00 PM	50.0000	1	22.22	-2934	-3077	15	
7/02/2008	2:35:00 PM	55.0000	1	22.21	-4355	-4569	15	
7/02/2008	2:40:00 PM	60.0000	1	22.21	-3643	-3822	15	
7/02/2008	2:45:00 PM	65.0000	1	22.21	-5066	-5315	15	

Shows all logged data from the sensor.

Data can be exported to excel spreadsheet.

To generate graph – highlight column(s) of interest and hit graph button.

3.2.22 Aquagraph – Graphical View



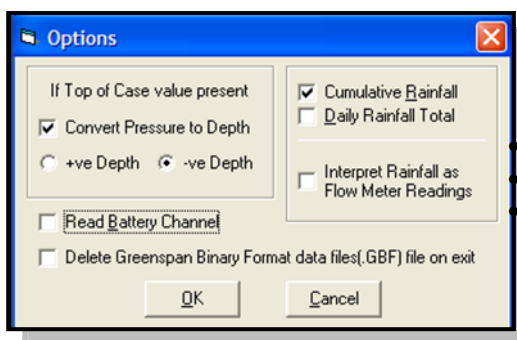
Graphs will self scale across the dates and ranges requested.

Multiple channels can be plotted on single graph, as well as stacked graphs for many parameters.

Various tools are available from Menu for highlighting points, adding text, zoom function etc.

Graph can be exported as a graphic (.bmp) file for reports etc.

3.2.23 Aquagraph – Tools & Options



Battery Details can be included.

Rainfall can be included in various formats

Instant readings (each tip)

Cumulative Total

Daily Rainfall total

Other options support display of flow meter readings, and conversion of pressure/level to Depth of Water above or below specified Datum levels.

Fully documented Help Function is available for Aquagraph by hitting F1 key while software running.

3.3 Quick Check and Re-Calibration

The Factory supplied Calibration Certificate will provide detailed information on the calibration of the sensor and should be retained for future reference.

To maintain high quality control over monitoring programs, it is recommended ODO calibration is checked every 3-6 months. The ODO3000 has a user calibration facility in SmartCom.

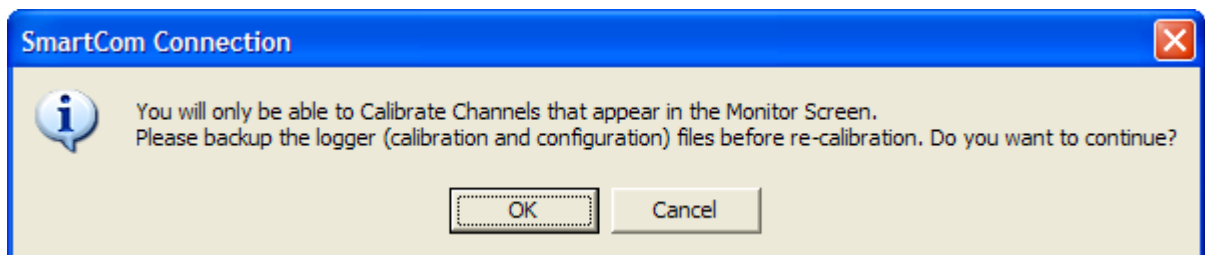
The sensor can be checked by use of known standards.

3.3.1 Quick check

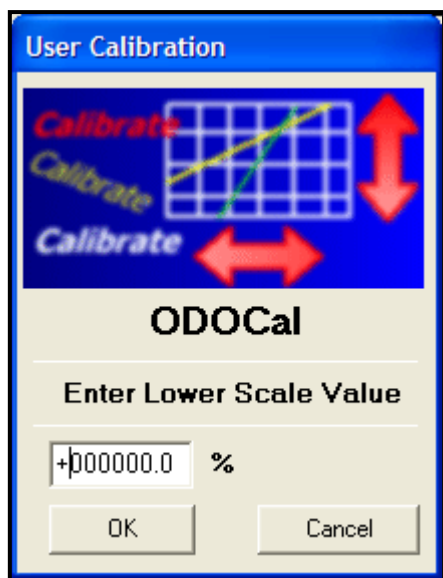
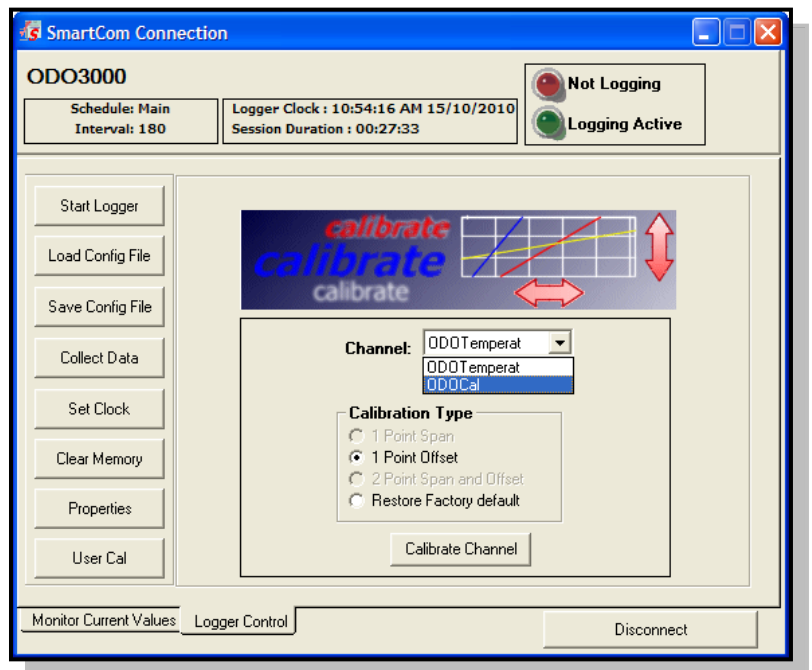
1. Remove the sensor from the water, ensure the sensor is clean.
2. Connect the sensor to a DC power source and connect the sensor to a PC and run SmartCom.
3. Place the sensor into a container with Sodium Sulphite solution (2 tea spoons Sodium Sulphite per 1 litre of water) for at least 10 minutes to allow the sensor to stabilise.
4. Once connected, the monitor screen will display the readings. The DO% Sat reading displayed, should be $\pm 1\%$ of 0% .
5. Remove the sensor from the container and rinse the sensor with clean water.
6. Place the sensor into a container of full scale solution (tap water aerated by an air pump and circulated using a water pump) and allow the sensor to stabilise for at least 10 minutes..
7. Check the reading on the monitor screen, the DO % sat should be $\pm 1\%$ of 98%.
8. This confirms that the sensor electronics has remained stable and no further action should be required if the sensor is within +/- 1% of these readings in different conditions.

3.3.2 Re-Calibration Method Using Calibration Solutions

1. Ensure the sensor is clean and dry.
2. There are 2 steps to complete the calibration for an ODO3000 sensor
 - the 1 Point Offset (zero calibration) and,
 - the 1 Point Span (full scale calibration)
3. Connect the sensor with the appropriate communication cable and turn on the DC power.
4. Run SmartCom for Windows.
5. In SmartCom for Windows, select User Cal from Logger Control menu. The following information message will be displayed. Click OK to proceed with calibration or cancel to quit.

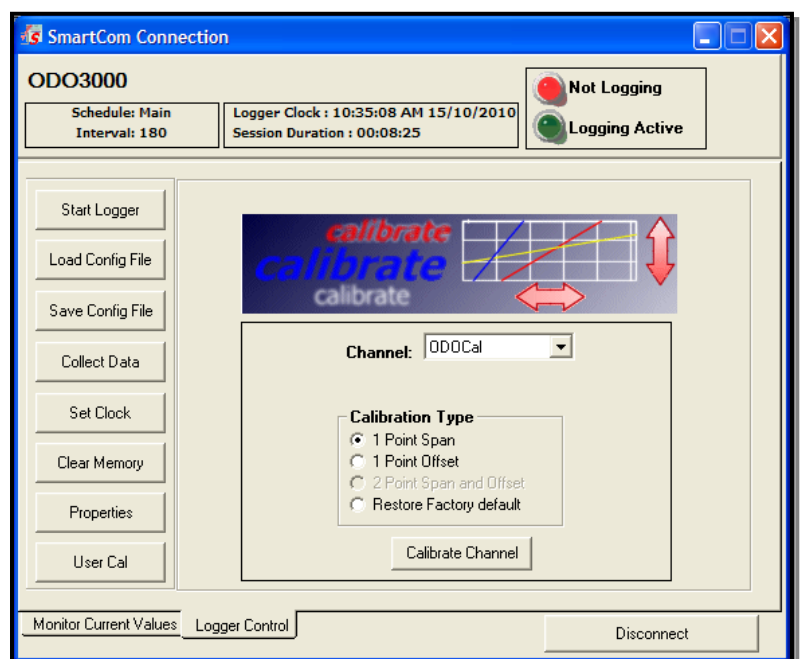


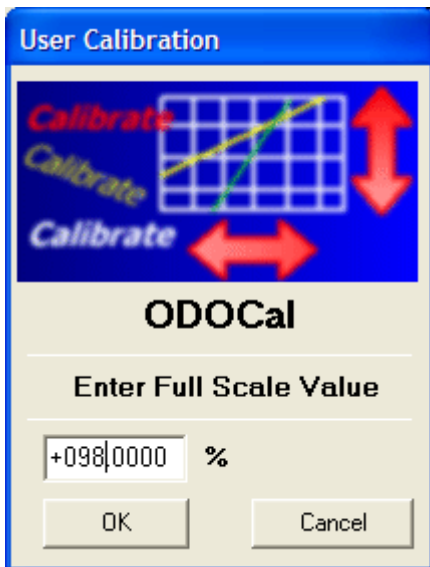
6. Select the calibration channel - ODOCal
7. Perform the zero calibration by selecting 1 Point offset in the Calibration Type.
8. Place the sensor into a Sodium Sulphite solution and allow 10 minutes to stabilise. Ensure the ODO head is fully submerged.
9. Click on the Calibrate Channel button.



10. The screen should display a window to allow entry of the new low value, type in 0 and click OK once the value has been entered.
11. Remove the sensor from the container and rinse it with clean water.

12. Perform full scale calibration by selecting 1 Point Span
13. Place the sensor into an aerated full scale and allow to stabilise for at least 10 minutes. Ensure the ODO head is fully submerged.
14. Click on the Calibrate Channel button.





15. The screen should display a window to allow entry of the new high value. Enter the new value e.g. 98% for the full scale value and click OK
16. Click on Monitor Current Values to verify the readings on the screen.

3.4 Installation

3.4.1 Field Deployment Considerations

The sensor head should always be completely submerged and positioned such that the possibility of air bubbles becoming entrapped on the sensor face is minimised. Bubbles may cause errors if trapped. For applications in harsh environments it is recommended that the Acetal body be specified.

The sensor head should be periodically inspected for fouling, and can be cleaned with fresh water and damp cloth. In marine environments crustaceans may need removal at regular intervals.

The body should always be fully immersed under the water to ensure the electronic module is at water temperature and to avoid any possible anodic/cathodic action taking place on the stainless body due to the oxygen difference across the boundary.

Care should be taken if clamps are to be attached to the Stainless Steel body as the depletion of oxygen to the clamp/probe interface can cause corrosion due to anodic/cathodic action. It is recommended that Acetal body sensors be used if clamping.

Sensors should generally be installed such that they can be easily and safely removed for cleaning, servicing, replacement of the wiper etc. For environmental applications the sensor can often be mounted inside a section of PVC or steel pipe which enters the water body. The sensor can then be slid down inside the pipe until the sensor head just protrudes into the water body. This provides a high degree of protection for the sensor from environmental (sunlight, heat, flood debris etc) as well as from other influences such as Cattle, vandalism etc. Most sediment transport occurs during storm events and flood conditions. Protection from floating debris damage is an important consideration along with adequate tethering of sensors.

Another widespread application of the sensors is to hang the sensors in the water body from a fixed structure or a floating buoy or pontoon. Generally in lakes or estuary applications the sensor can hang on its own cable, and easily retrieved for routine servicing.

3.4.2 Cabling Considerations

Care should be taken with installation and field servicing to ensure the cable is not subjected to persistent pulling snagging or severe compression. Cyclic loading of the cable should also be avoided through careful sensor deployment. Additional stilling wells or mounting brackets may be required to prevent sensor movement which may cause long term cable movement. Where cable runs are required which may be subject to environmental effects (heat, water movement, sunlight, flood debris etc) it is advisable to protect the sensor cable inside a slightly larger diameter conduit such as PVC, steel or polyethylene. This also allows the sensor cable to be pulled out – should a sensor change-over be required at the site. Maximum cable runs up to several hundred meters are possible without affecting electrical signals. The maximum cable length is dependant on the capability of the com port of the computer. Most computers should be capable of driving a 150 to 200m cable length.

3.4.3 Typical Sensor Installations

1. Edge of river/stream/lake embankment.
2. Side of boat/vessel.
3. Mounted within a stilling well off stream from main flow.
4. Mounted within drainage channels/pipes.
5. Suspended from dam walls or floating pontoon.
6. Sensor anchored to bed of lake/stream.

3.4.4 Field Installation must ensure:

- The sensor is anchored or held in position or located so it is not subject to any movement during normal operations.
- Sensor is protected from direct sunlight to avoid high temperature fluctuations
- Sensor is protected against high turbulence and possible debris loading during flow events
- The rubber storage cap is removed from the electrode

3.4.5 Other Considerations

Environmental compatibility should be checked before using the sensors and advice sought from Greenspan if any doubt exists. The sensor utilises some 316 stainless components that are suitable in a majority of situations but care should be taken against possible corrosion in high Chloride, Sulphate or Ferric solutions. The body should always be totally immersed under the water to ensure that the sensor is at water temperature and to also avoid any possible anodic/cathodic action taking place on the components at the water-air interface. If using clamps to mount the sensor – these should be of a type that evenly clamps the sensor body without excessive loading that could damage the sensor body.

3.4.6 Guidelines for cleaning equipment



The sensor and electrode may be cleaned using a soft cloth, mild detergents and warm water. If the sensor shows signs of marine growth a light biocide can be used to clean and kill any biological growth on the sensor. The sensor will be damaged by the ingress of water or other solutions into the electronics cavity and Warranty will be voided if disassembled. Rinse the electrode in clean water prior to installing sensor or checking calibration.

4 Appendix A -Additional Information

4.1 Specifications

Measurement Technique	Oxygen fluorescence detection method
Sensor Range	0-200% saturation (0-20ppm)
Sensor Outputs	Internal data logger – serial output via software Optional adaptor provides SDI12 serial output (3wire)
Resolution	Dissolved Oxygen 0.1%, temperature 0.05°C
Accuracy	Oxygen 1% of reading or 0.02ppm whichever is greater
Response Time	95% of DO change within 60 seconds
Cable Type	Polyurethane sheathed cable, OD 8mm, with 3mm vent tube, moulded entry, bare wire connection
Cable lengths	10, 20, 30, 50, 100, 150 m (32, 65, 100, 165, 325, 490 ft)
Power Supply	8 to 16 Vdc External Supply or On Board Battery Pack (option)
Reverse Polarity Protection	Yes
Surge Current Protected	To 2kV
Warm up time to stable reading	2 sec
Current Consumption	Sleep 0.5mA, Logging 10mA, Communicating 30mA
On Board Battery Pack (option)	Housing screws to sensor size (L x OD) 250mm x 47mm
Battery Capacity	9 x Lithium AA (3.6Volt) – Total capacity 5.2Ah @10.8v
Typical Field Life (Batt Pack)	Over 6 months remote operation @ 30min logging
Internal data logger	Non-Volatile, battery backed RAM with real clock
Memory Size	2Mb capacity, with user selectable wrap function
Measuring Units	User definable
Data storage	250,000 readings (typically 5 minute data for >12months)
Logging frequency	User selectable from 1 second up to once per day
Averaging Alarms	User selectable via supplied Smartcom software
Operating temperature	0-50°C
Storage temperature	-5 to 60°C
Depth Rating (water column)	100m
Weight	800g plus cable weight (665 per 10m length)
Dimensions (L x OD)	404.5mm x 47mm (15.93" x 1.85"), 619.5mm x 47mm (24.39" x 1.85") with battery housing
Wetted Materials	UPVC, Acetal, 316 Passivated Stainless Steel, Polyurethane, Viton

4.2 Example Certificate of Conformance



ODO3000 Optical DO Sensor

CERTIFICATE of CONFORMANCE

Customer: "Click here & type Customer name"
Model No. ODO3000 Optical DO Sensor (Tyco Environmental Systems material # 700-5200)
Sales Order Reference: "Click here & type SO Reference"
Serial Number: "Click here & type S/N"

Product Information



ODO3000 Optical DO Sensor

Range	DO	0-25ppm/0-200% SAT
	Temp	0 – 50°C
Linearity & Accuracy	See note 5	
Cable Length	"Click here & type Cable length" M	
Firmware Version	RC 3.11	
Ext Supply Voltage	9-30 VDC	
Power	+ve	Red
	Gnd	Black
	Shield	Yellow/Green
Output	RS232	
Connection Code	HS7/Detachable/CX9 (delete applicable)	

User Notes

1. Do not attempt to dismantle the sensor as it will void the warranty. Contact your agent for technical advice.
2. The sensor is protected against reverse polarity connection.
3. Maximum submersible pressure 100m H₂O
4. The sensor turn on time is factory set to 5 seconds
5. Accuracy specifications are as follows:

ODO 1 % of reading or 0.02ppm (whichever is greater)
Temperature ± 1°C

Inspected By: _____ 28 October, 2010

Manufactured By:
 Tyco Environmental Systems (Greenspan Analytical Plant)
 22 Palmerin Street
 WARWICK QLD 4370
 AUSTRALIA Phone: + 61 (0)7 46601888



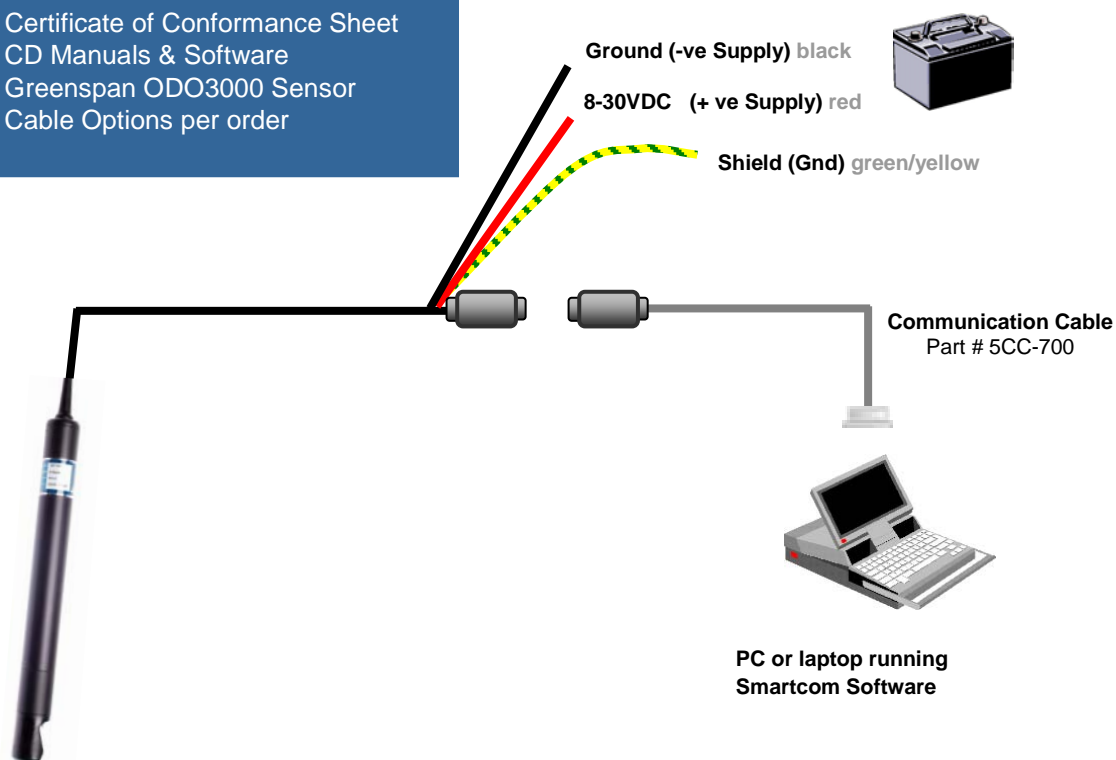
4.3 Example Quick Start Guide

Quick Start Guide – ODO3000 Optical DO Sensor

Procedures for connecting and configuring the Greenspan ODO3000 Sensor.
Further details in the Sensor Manual included on the Greenspan CD

You should have received:

- Certificate of Conformance Sheet
- CD Manuals & Software
- Greenspan ODO3000 Sensor
- Cable Options per order



*ODO3000 provides a complete measurement & logging system for pH.
Communication and configuration of the sensor is via the Smartcom
Software on the supplied CD.*

4.4 Engineering Note – Detachable Cables

ENGINEERING NOTE

RELEASE DATE: 28/4/2008

SUBJECT: Connecting and Disconnecting the Detachable Cable for Greenspan Sensors (packaged in 47mm & 65mm Tubes)

IMPORTANT NOTE:

You have been supplied with:

2 x O-Rings (Greenspan part number 011-OR16X2.5)

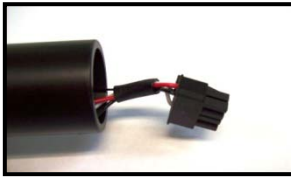
2 x Grub Screws (Greenspan part number 512-M4X6SS316P)

1 x Allen Key

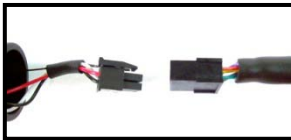
Prior to connecting your sensors to the detachable cable, please ensure that the detachable cable entry has been fitted with O-Rings supplied as detailed above. Ensure O-Ring grooves are greased and then slide O-Rings and fit into the recessed grooves.



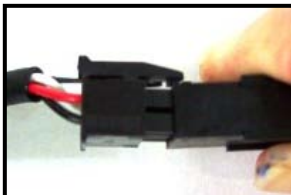
Refer to the following instructions for **connecting** to your sensor to the detachable cable



1. The sensor connector is exposed and ready to connect to the cable connector.



2. Align the cable connector with the sensor connector and push together. The connector is polarized and will only fit together one way.



3. Once connectors are completely pushed together, the rocker arm on the sensor connector will clip in with the cable connector and secure the connection.



4. Carefully feed the connection back into the sensor tube taking caution not to crimp or damage any wiring. Ensure the O-Rings have been fitted to the moulded cable entry as directed at the beginning of this document



5. Twist carefully to align the grub screw holes. Firmly push the tube back onto the moulded cable entry



7. Screw in two (2) 512-M4X6SS316P grub screws to secure the cable and the sensor with supplied Allen key



8. The cable is now securely fitted to the sensor.

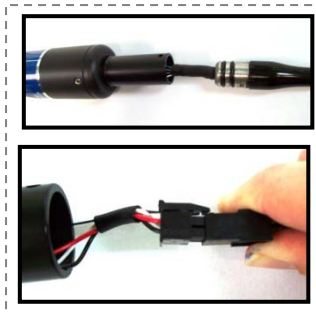
Refer to the following instructions for **disconnecting** to your sensor to the detachable cable



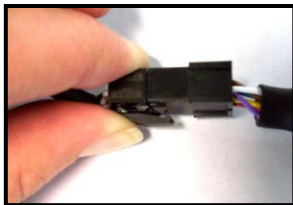
1. Sensor with cable attached and ready for cable disconnection.



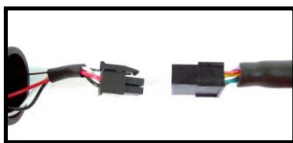
2. Remove the two (2) grub screws (Greenspan part #512-M4X6SS316P) using the Allen key supplied. (N.B Allen key is supplied in spare parts kit with original packaging)



3. CAREFULLY pull tube away from cable mould. Once the tube has been pulled away from cable mould, the connector will be revealed as pictured left.



4. Release locking device on the connector by gently pinching rocker arm on the cable connector and pull apart.



5. The sensor and cable are now detached.

Note: When the cable is not connected to a sensor, please ensure the supplied vent cap is fitted to the vent tube (if applicable)